

Action Research in the Peruvian Amazon

System change in the Amazonia: reversing negative trends in Madre de Dios, Peru

Prof. Dr. Armando Valdés-Velásquez

Content of this presentation

What am I going to talk about.



About myself so you get to know me a bit (+ positionality)



About Wyss Academy for Nature, both globally and “locally” (in Peru)



About some results from our research (+ opportunities!)

Armando Valdés-Velásquez



Advisor & Scientific
Lead for the South
American Hub /
Wyss Academy for
Nature



Professor –
Universidad
Peruana Cayetano
Heredia

Lead: *Research
Group on Socio-
Ecological Systems*

Associated: Latin
American Centre
for Climate Change
and Health
(CLIMA)



Dr. rer. nat. in
Zoology &
Geography – RFW
Universität Bonn,
Germany.

Interest in
relationships
between human
beings and nature



armando.valdes@wyssacademy.org



We are a global organization born in 2020 as a result of the collaboration between:



**Kanton Bern
Canton de Berne**

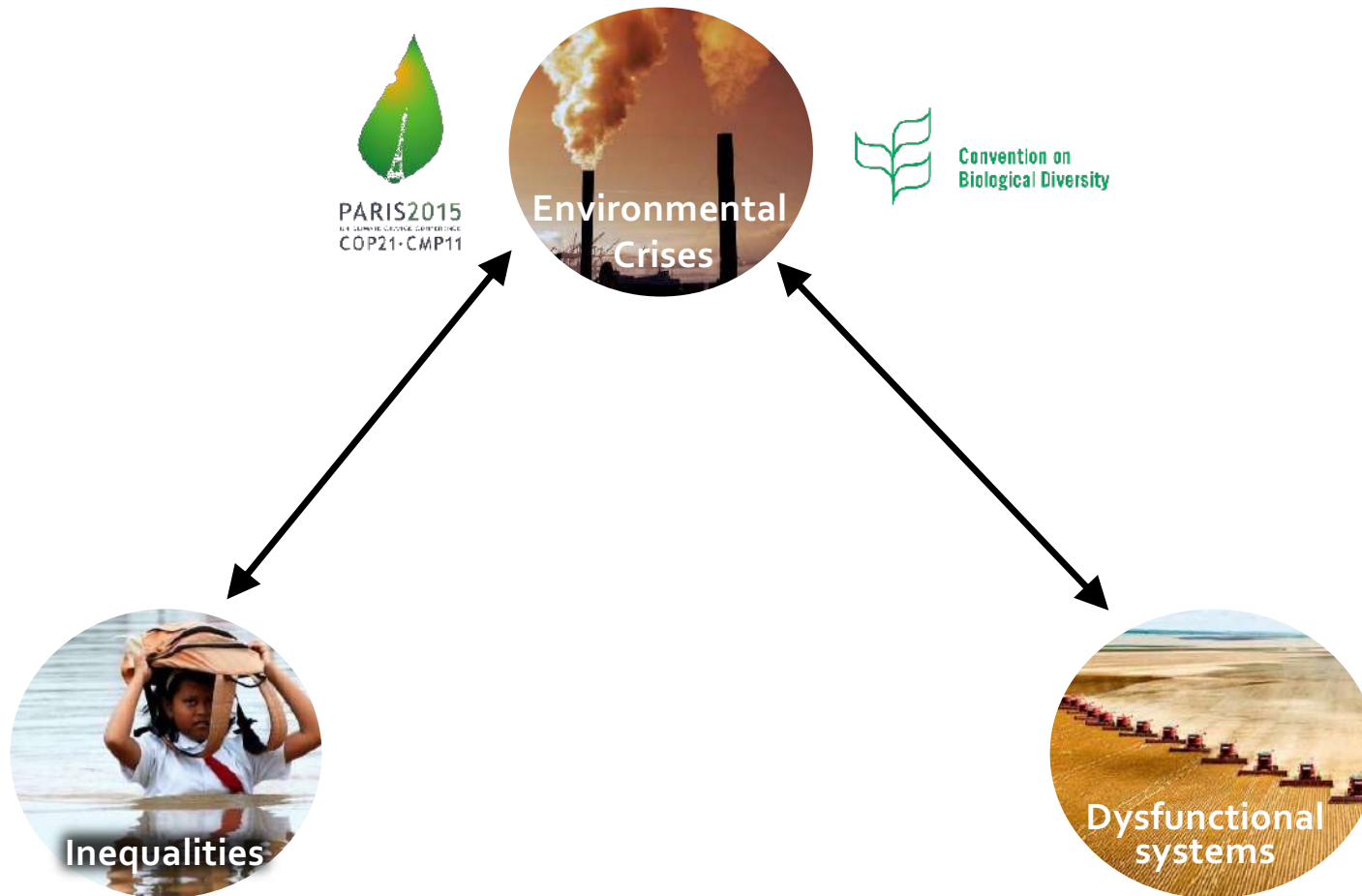


**^b
UNIVERSITÄT
BERN**

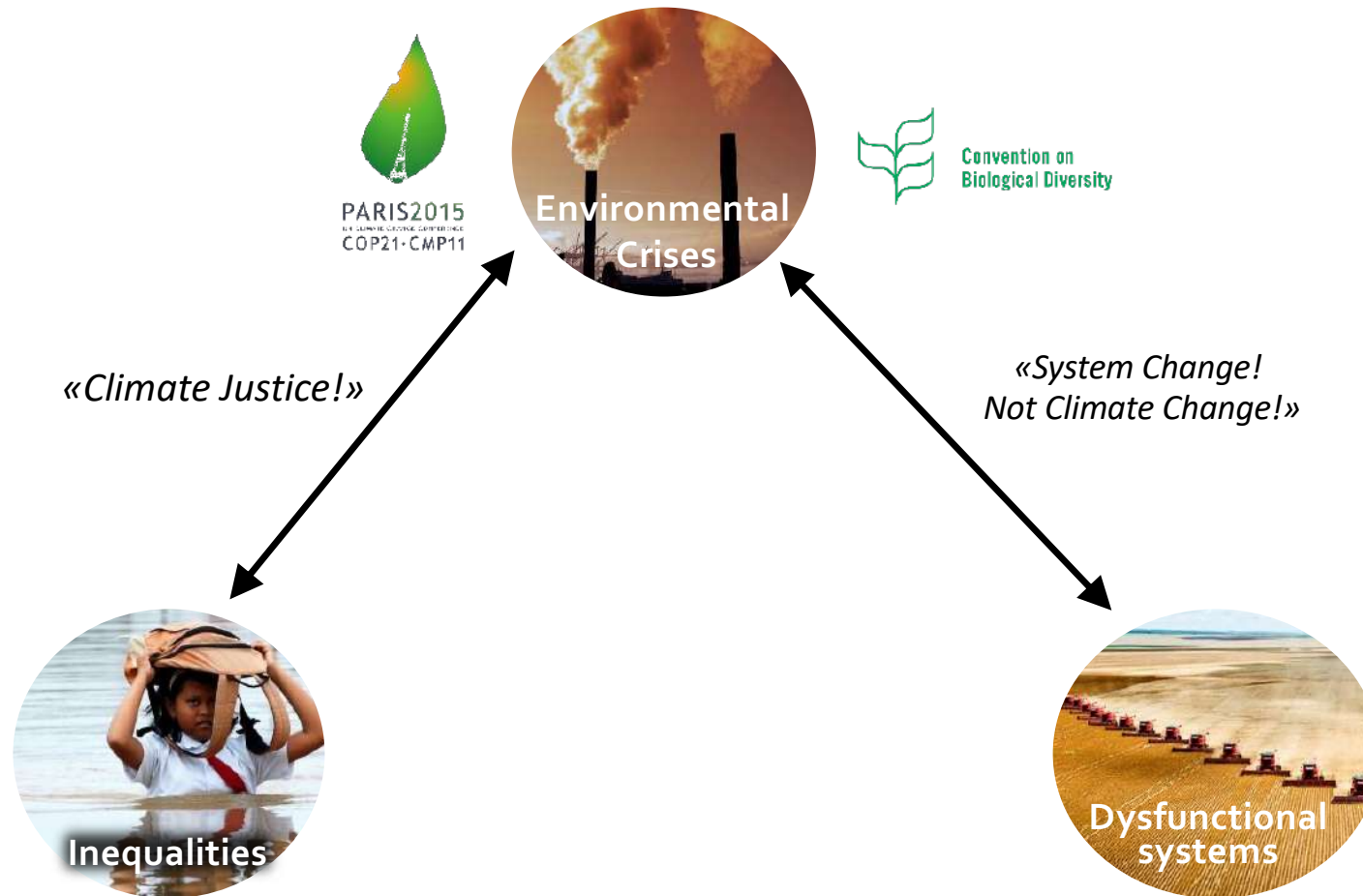
The current “sum” of all the crisis requires transformation



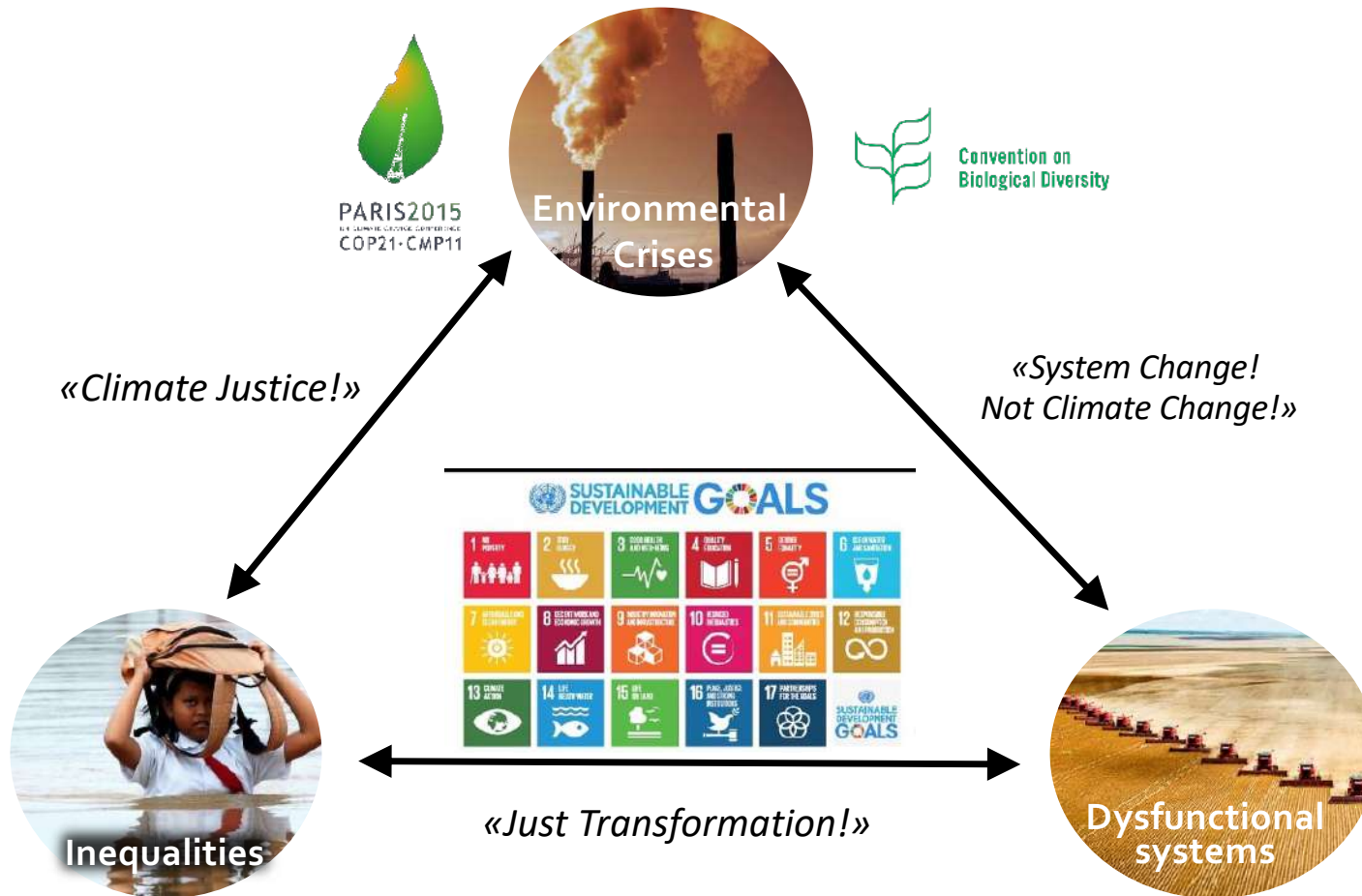
The current “sum” of all the crisis requires transformation



The current “sum” of all the crisis requires transformation



The current “sum” of all the crisis requires transformation



The Wyss Academy wants a just and sustainable world in which ***nature conservation and human wellbeing*** reinforce each other.





We build bridges between scientific **knowledge**, political power, and action.

By **engaging** with various stakeholders, we develop, test, and **catalyse solutions** *transforming the relationship between people and nature.*

Engagement



The co-design process involves all relevant stakeholders, from science, government to businesses and local groups.

Engagement



The co-design process involves all relevant stakeholders, from science, government to businesses and local groups.

Knowledge



Developing a shared understanding of the socio-environmental system is an important basis for negotiating a common vision of the future.

Engagement



The co-design process involves all relevant stakeholders, from science, government to businesses and local groups.

Knowledge



Developing a shared understanding of the socio-environmental system is an important basis for negotiating a common vision of the future.

We run incubator projects to catalyse solutions. These are designed and tested within our solutionscapes.



Incubation

Engagement



The co-design process involves all relevant stakeholders, from science, government to businesses and local groups.

Knowledge



Developing a shared understanding of the socio-environmental system is an important basis for negotiating a common vision of the future.

We run incubator projects to catalyse solutions. These are designed and tested within our solutionscapes.



Incubation

We can only succeed if we learn from failures and the unexpected.



Reevaluation

Our strategy

We are committed to identifying and implementing **local solutions** to urgent global challenges.

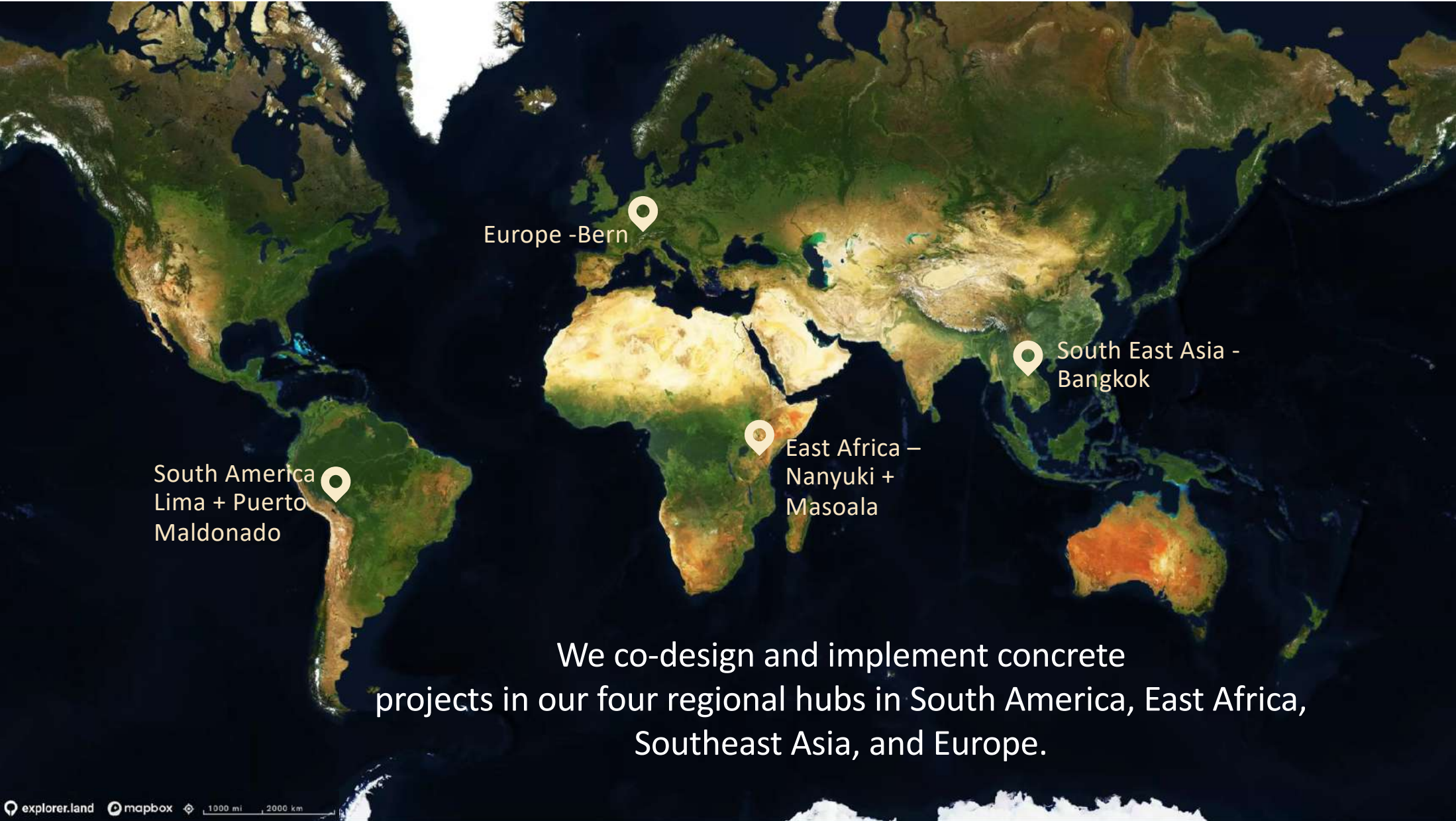
We try to break down the **silos of research, policy, and practice** and to offer pathbreaking opportunities for **collaboration**.



Our structure

We bring together **research and innovation teams, policymakers, and action** at our regional hubs on four continents.





South America
Lima + Puerto
Maldonado

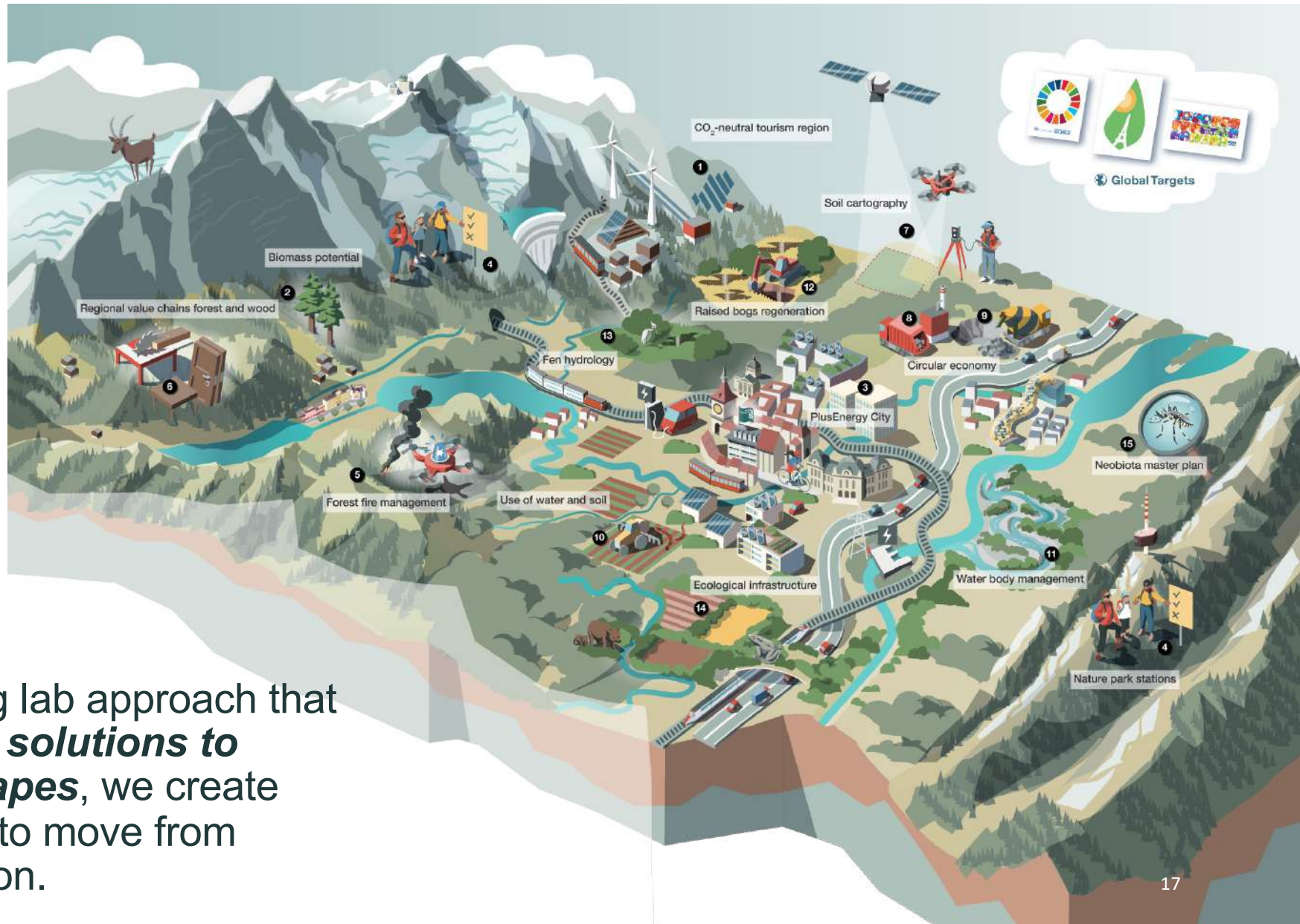
Europe - Bern

East Africa –
Nanyuki +
Masuala

South East Asia -
Bangkok

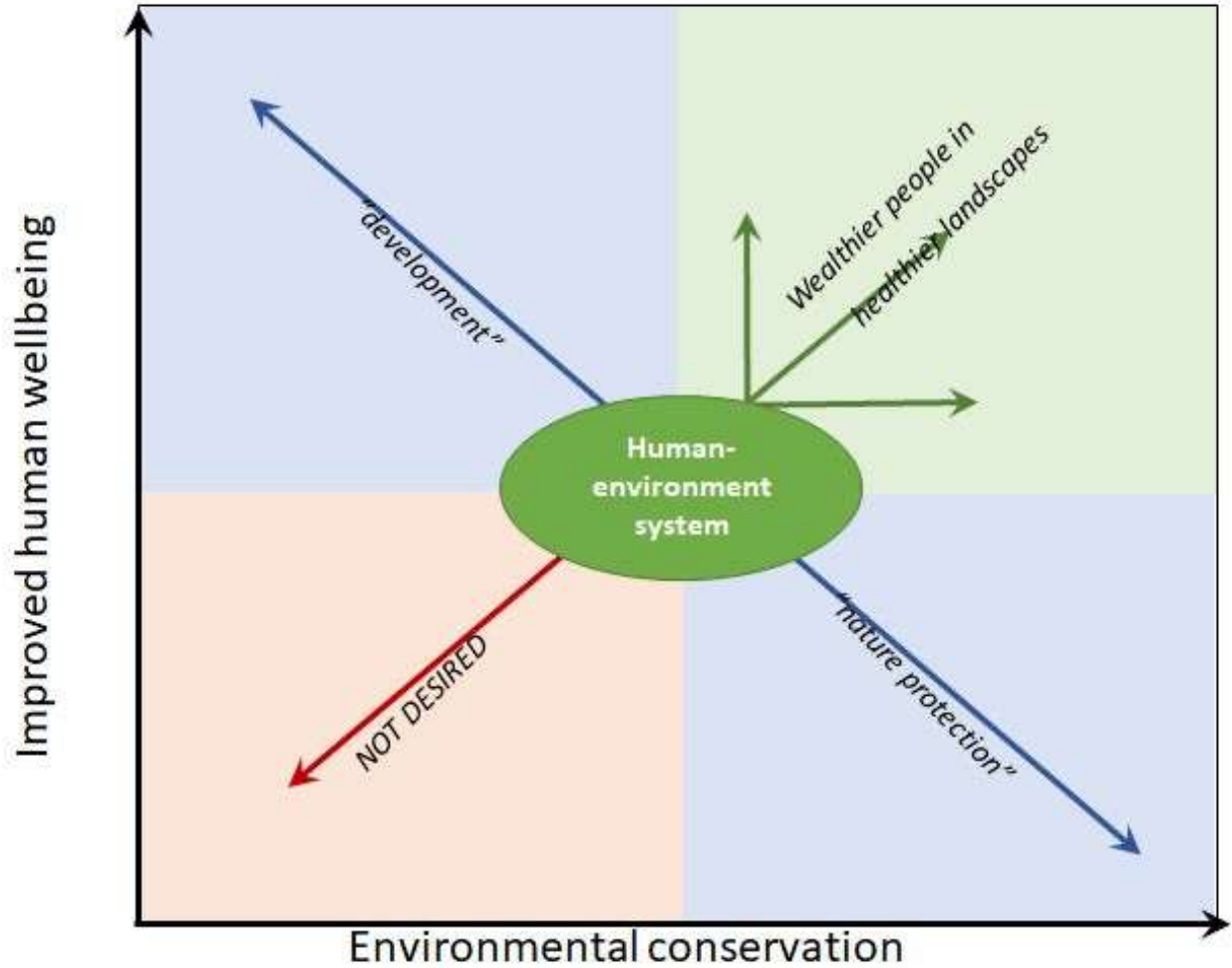
We co-design and implement concrete projects in our four regional hubs in South America, East Africa, Southeast Asia, and Europe.

“Solutionscapes”



Taking a living lab approach that brings **global solutions to local landscapes**, we create opportunities to move from insight to action.

What
success
looks like
for us



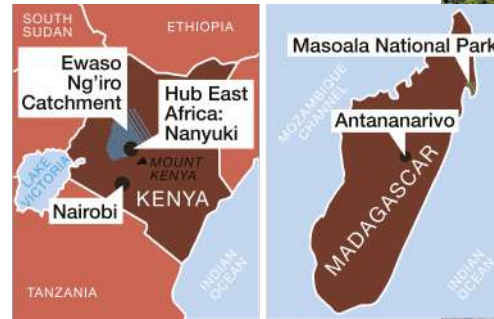


Hub Southeast Asia

In Laos and in Thailand, we counter illegal resource extraction through local stewardship, and we work to maintain multifunctional landscapes that benefit agriculture, development, biodiversity, and society.



Photo: Anne Fritzenwanker, @Travelbee_photo



Hub East Africa

In Kenya and Madagascar, we work to enable the coexistence of people and nature by maintaining the connectivity, functionality, and health of ecosystems.



Photo: Peter Messerli, Diversifying agricultural and non-agricultural revenue in Madagascar



Hub Europe-Bern

In the Canton of Bern, in Switzerland, we promote sustainable human activities and people–nature interactions in ecologically sensitive areas. We strive to enable a transformation to sustainable energy systems in urban and rural regions, including carbon-neutral tourism, and encourage steps toward a more sustainable food system.

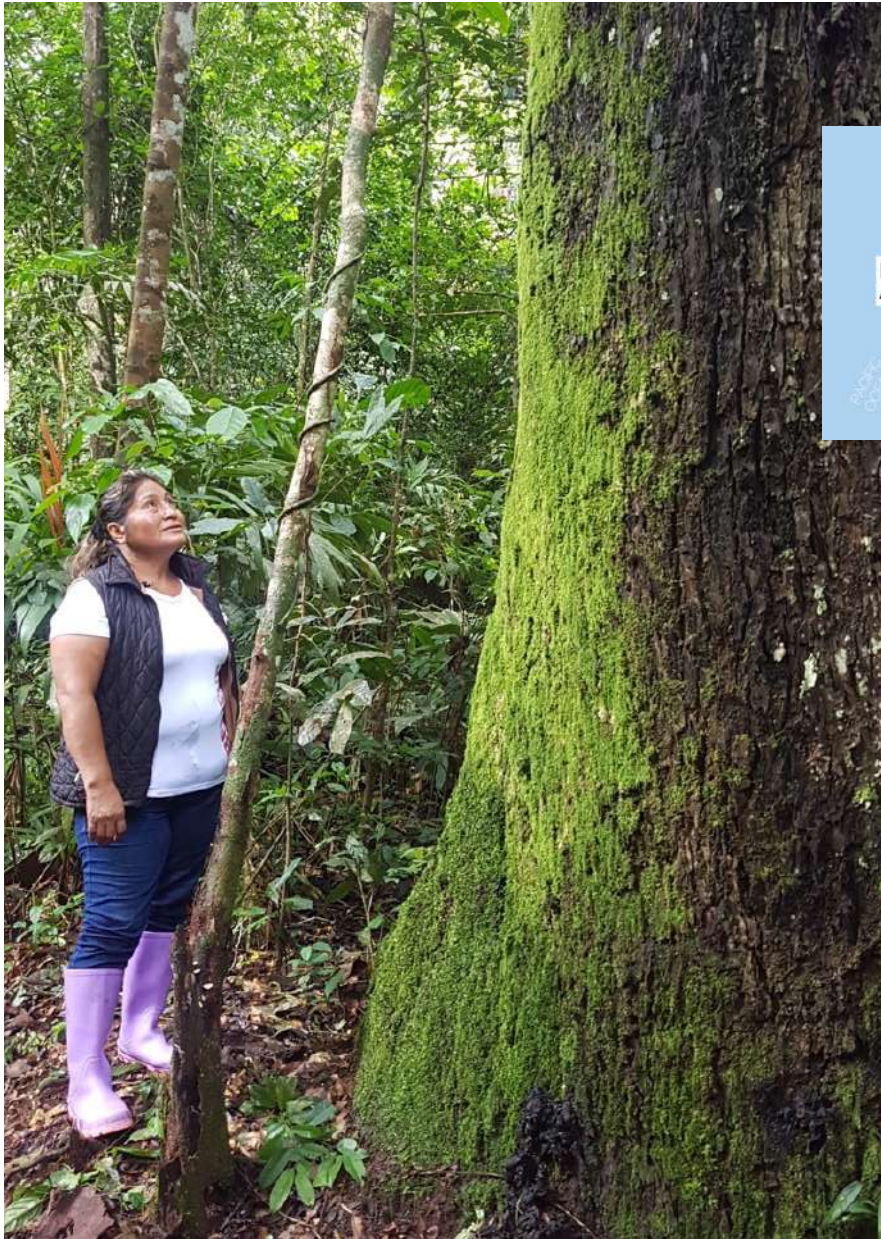
Photo: Stopping biodiversity loss in water bodies – despite climate change



Hub South America

In Peru, we co-design land use models that contribute to forest protection as well as people's livelihoods and offer true development alternatives to exploitative resource use.

Photo: Julie Zähringer, Amazonian Forest, Brazil Nut trees



Our fields of research

One of their goals is to support the design of pilot projects in the region where we act and guide the implementation through rigorous scientific evaluation.



**Climate Scenarios
for Sustainable
Development**



**Land Systems and
Sustainability
Transformations**



**Political Economy
and Sustainable
Development**



**Integrative
Biodiversity
Conservation Science**



**Environmental
Governance and
Global Development**



Prof. Dr. Edouard
Davin



Prof. Dr. Julie
Zähringer



Prof. Dr. Kai Gehring



Prof. Dr. Margaret
Owuor



Prof. Dr. Quynh
Nguyen

Our values

Through continuous reflection and adaptation of our behavior according to our values, we can ensure that we stay on track in our efforts to achieve a more harmonious and sustainable relationship between human beings and nature.



Impact driven



Innovation oriented



Entrepreneurial

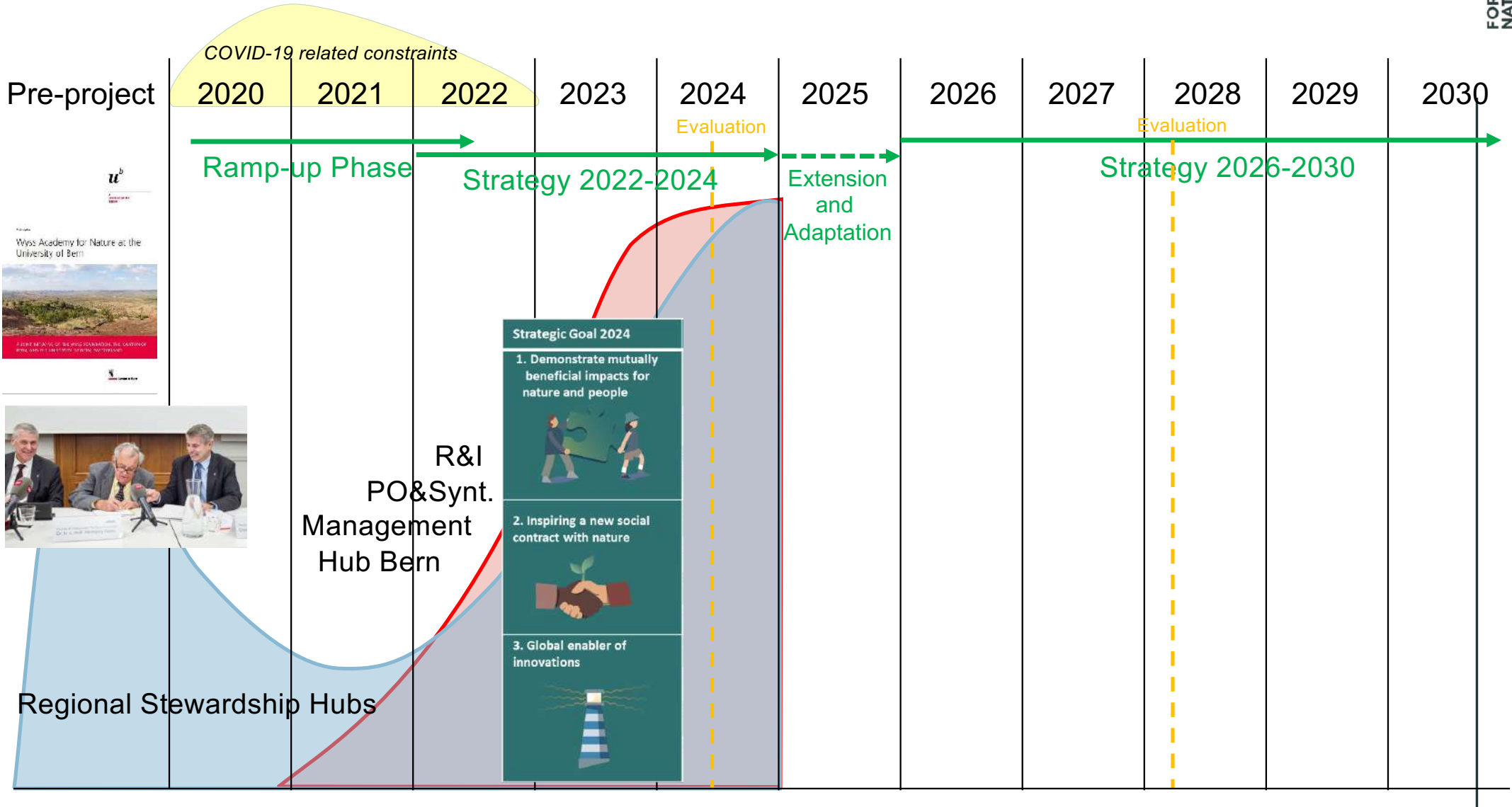
Transparent & fair



People centered



Timeline



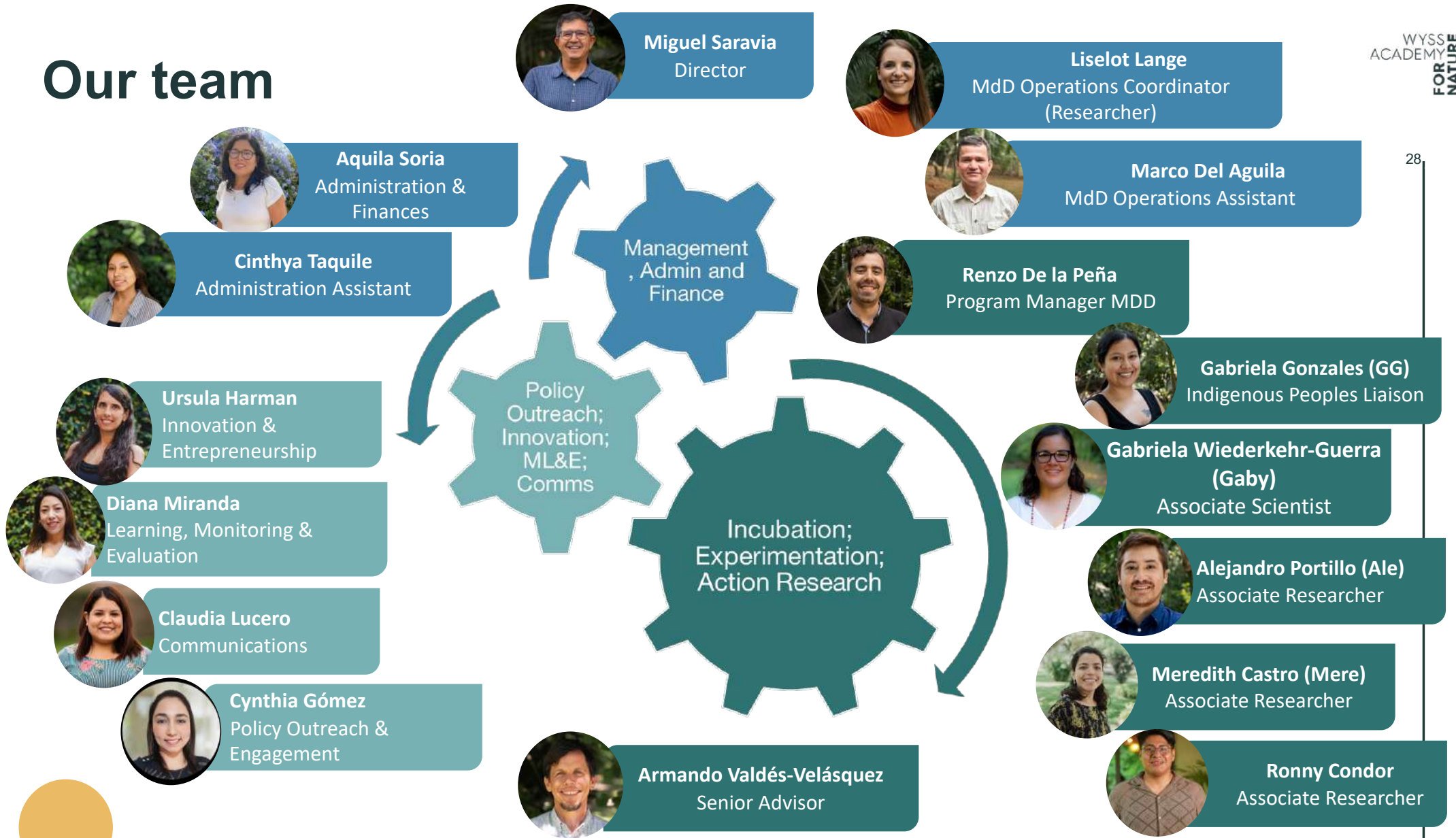
Hub South America

In Madre de Dios, we **co-design** land use models that **protect forests, promote sustainable** resource use, and strengthen **people's livelihoods**.

*Healthy forests for People
Bosques saludables para vivir bien*



Our team



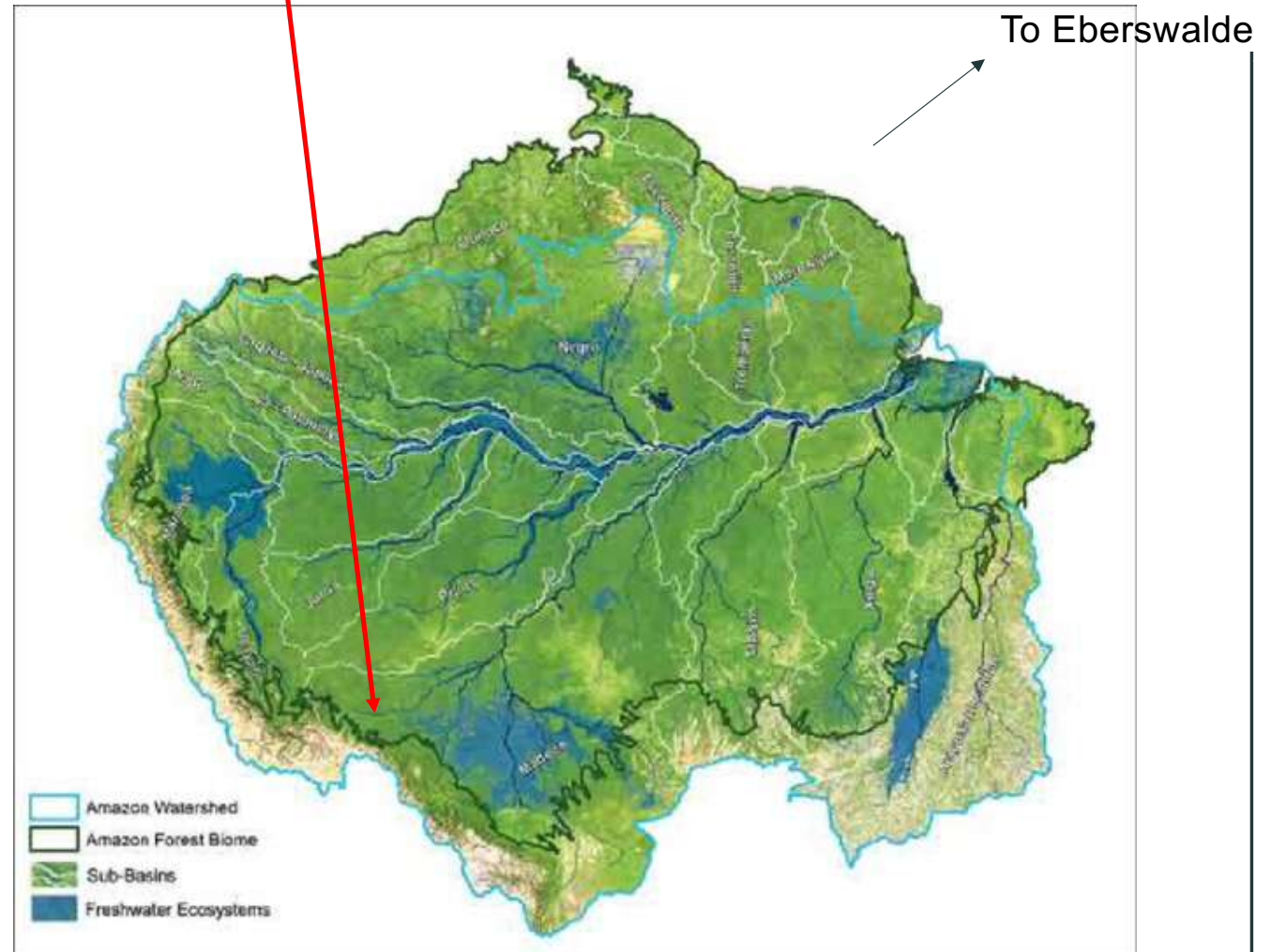
Where do we work?

The Amazon watershed/basin/geopolitical region/countries

Southwestern Amazon = Southeastern Peru



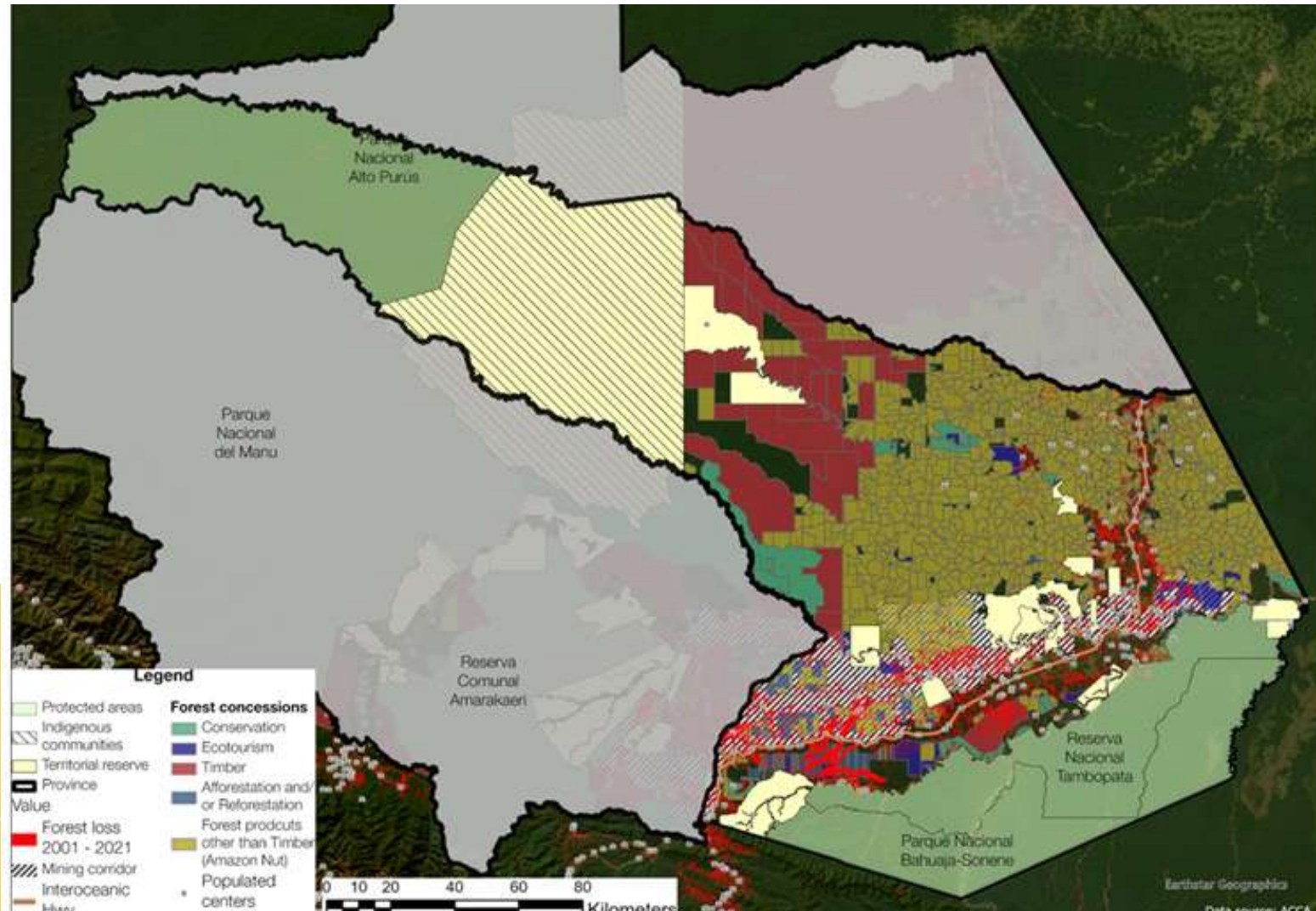
More or less here



Where do we work?

*Tambopata Province
Madre de Dios Dpt.*

*Mainly Tambopata
Reserve Buffer Zone and
along the Interoceanic
Highway.*



What do we do?

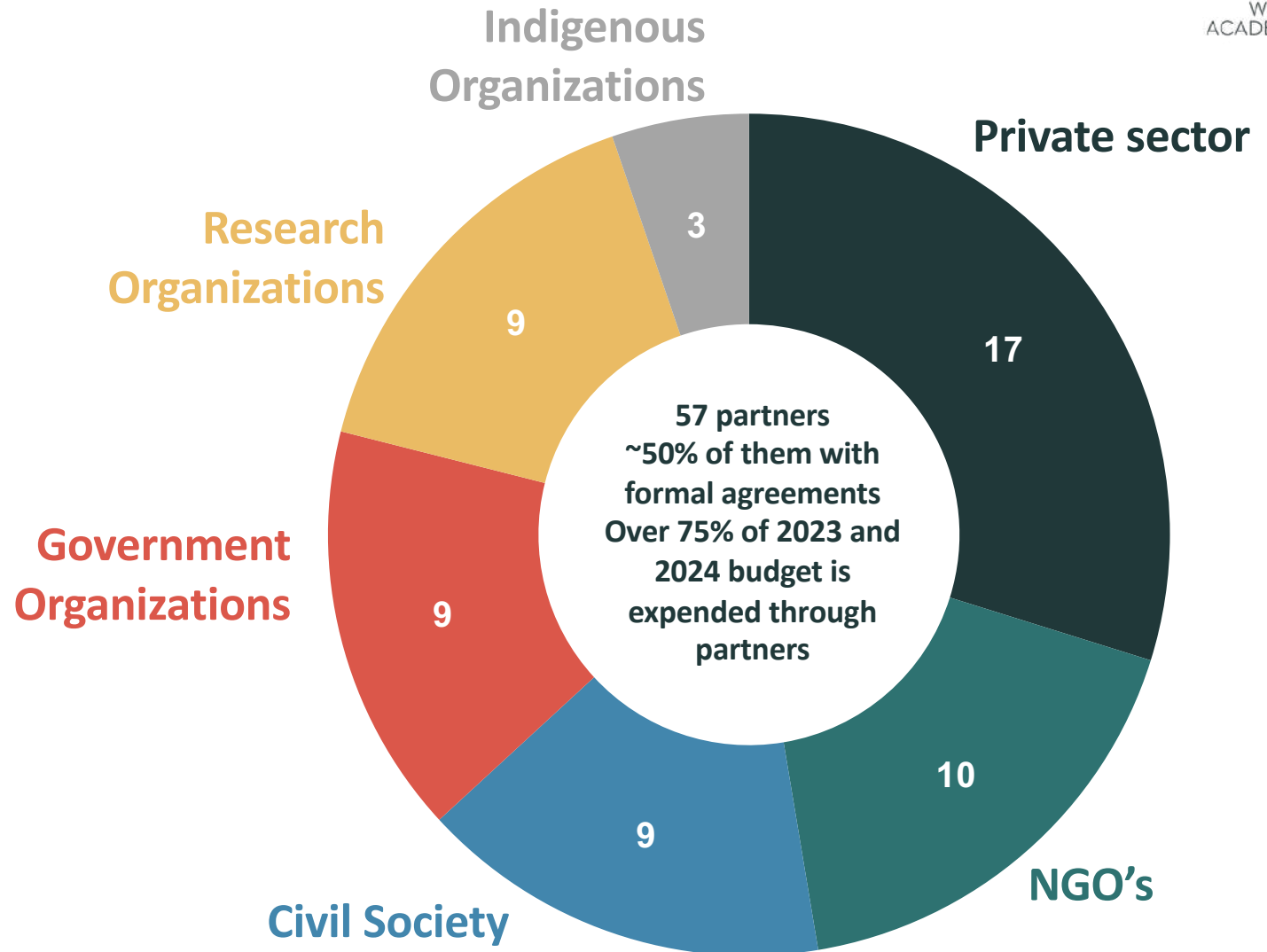


We catalyse.

We **connect** different *knowledge systems* and *actors*, **generating** and offering *spaces* for discussion, reflection and co-creation of innovative solutions.



We engage with partners



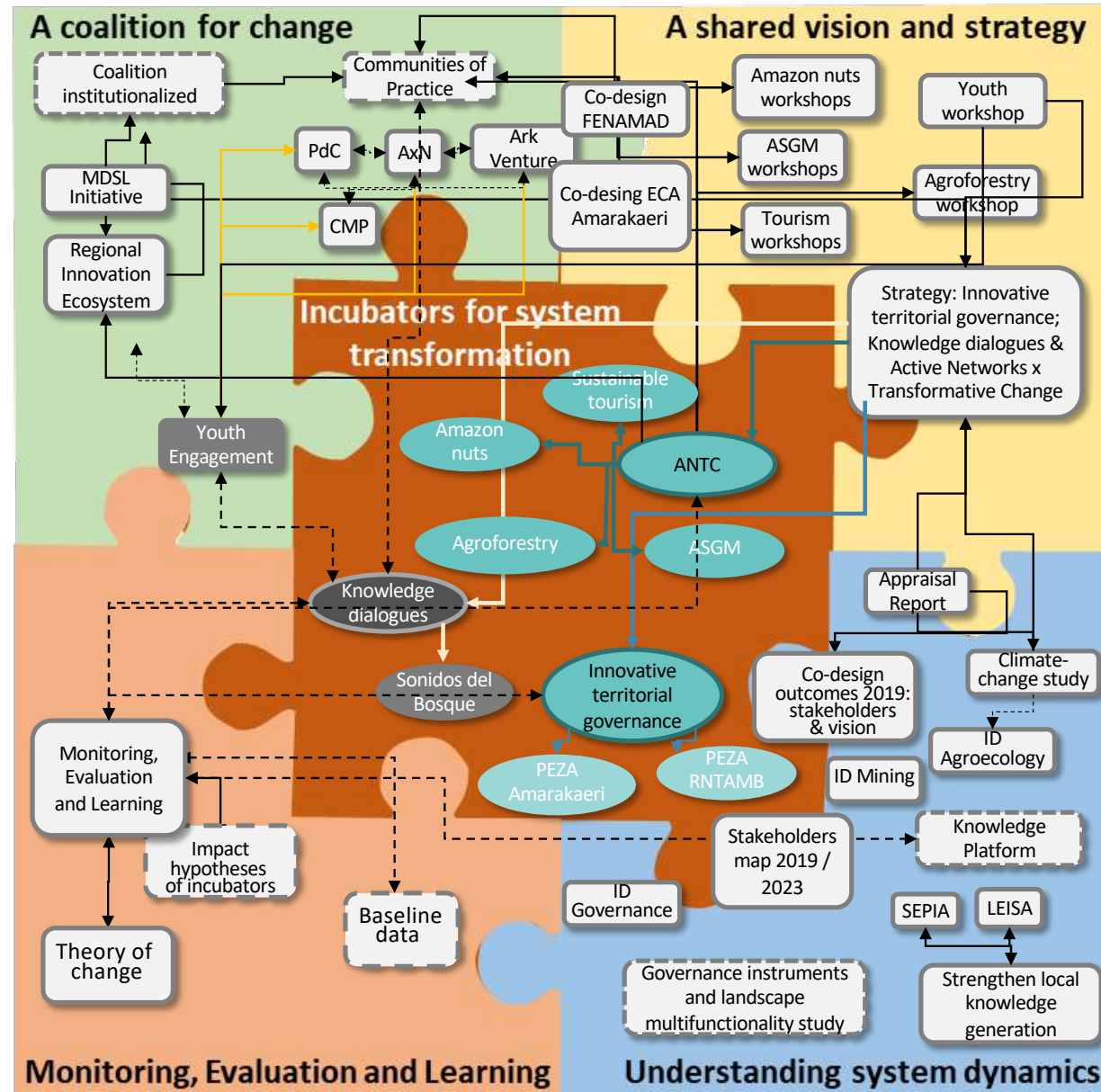


“As a young indigenous person, I have been pleased that all of us (private sector, public sector, NGOs and academia) have been able to discuss and agree on ideas and proposals. We have been able to achieve alliances and links with the organizations we have always wanted to talk to.”

Genaro Escalante
Federación Nativa del Río Madre de Dios y Afluentes
(FENAMAD)

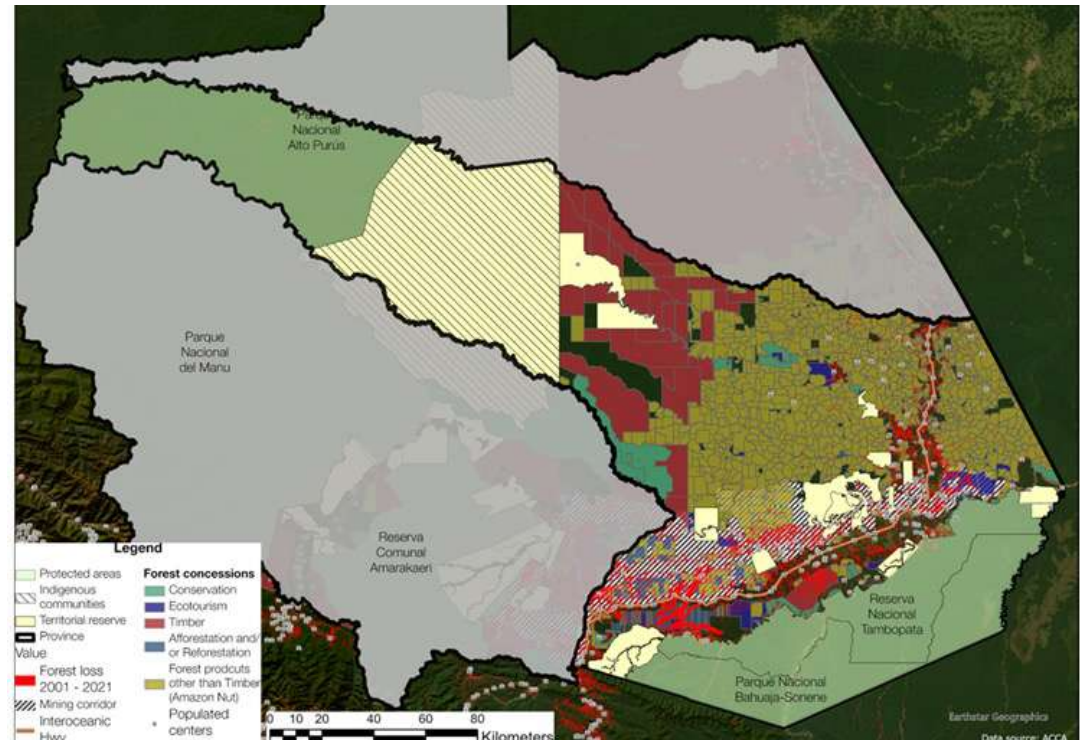
Healthy forests for people

Connections towards transformations

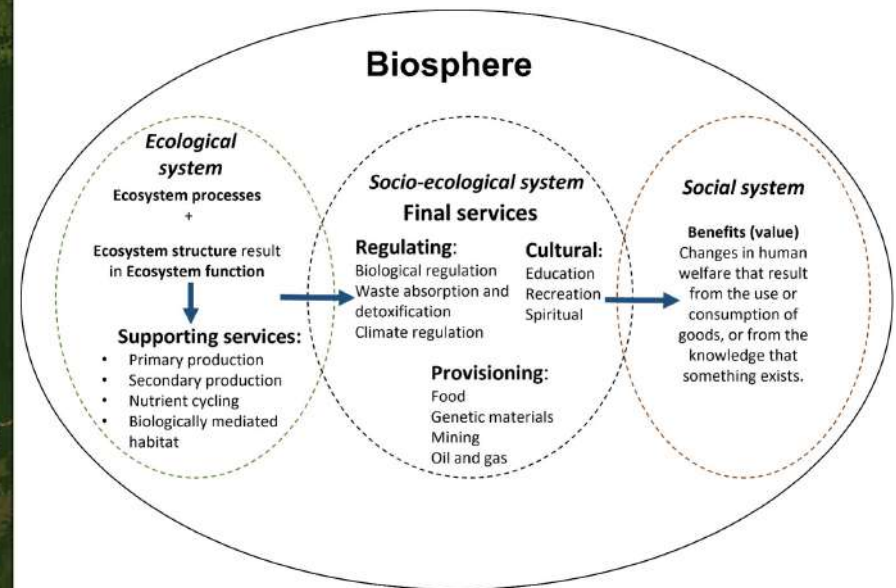
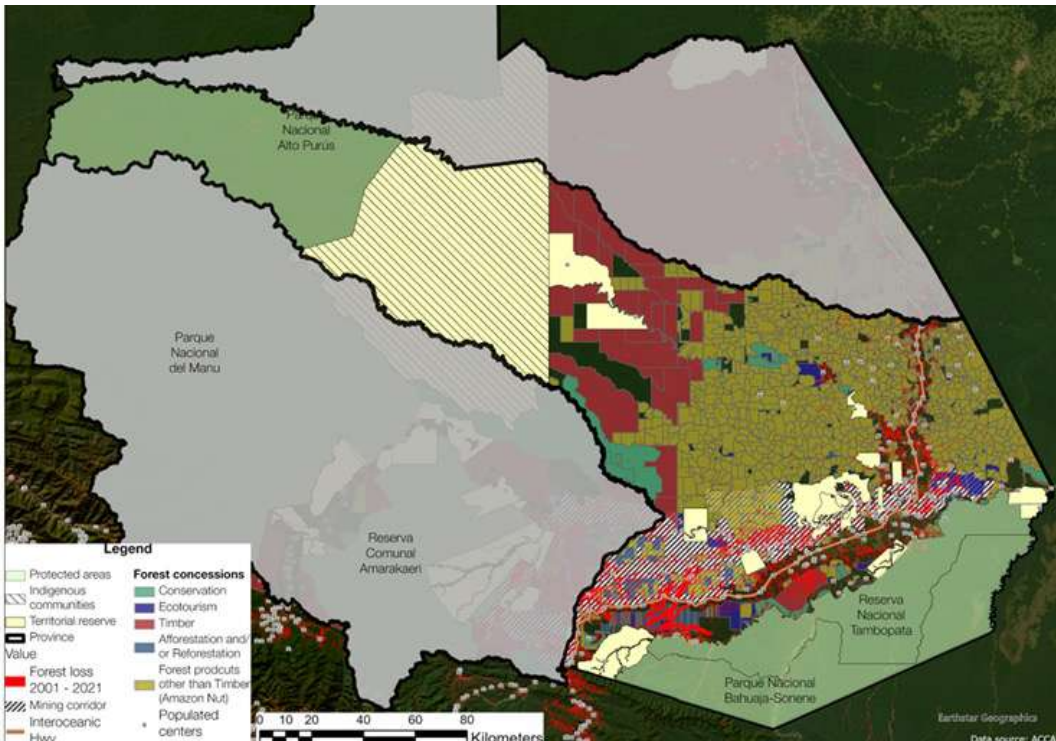


What do we do?

We are trying to address a challenge here...

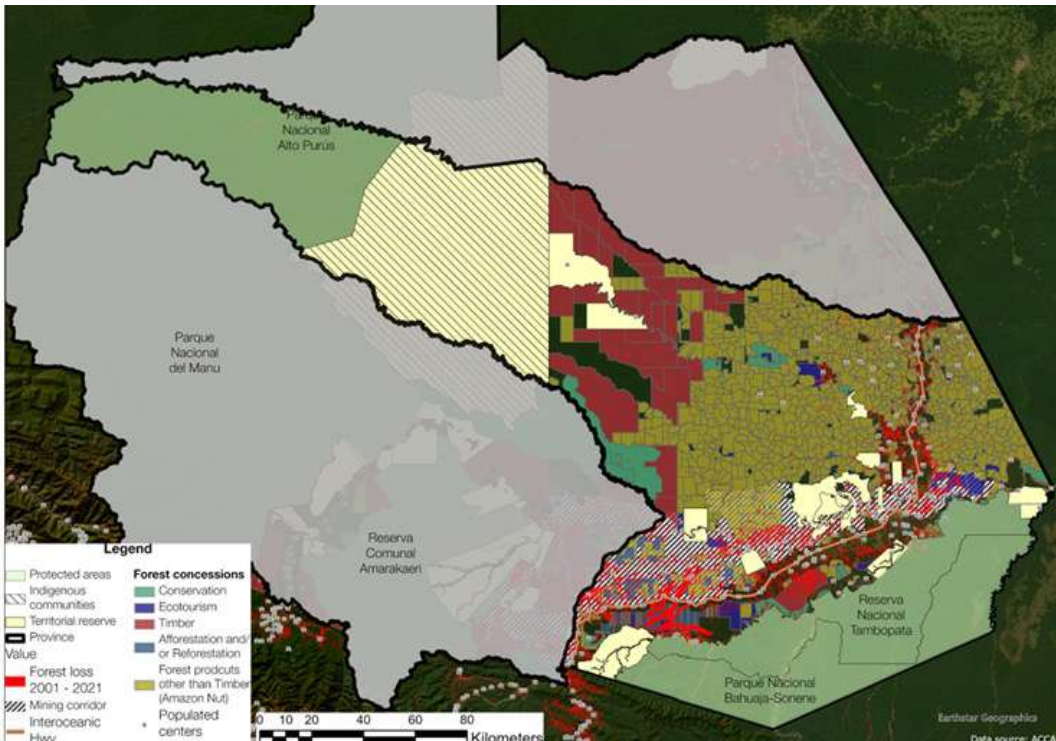


The Challenges in Madre de Dios, Tambopata



[This Photo](#) by Unknown Author is licensed under [CC BY](#)

The Challenges in Madre de Dios, Tambopata

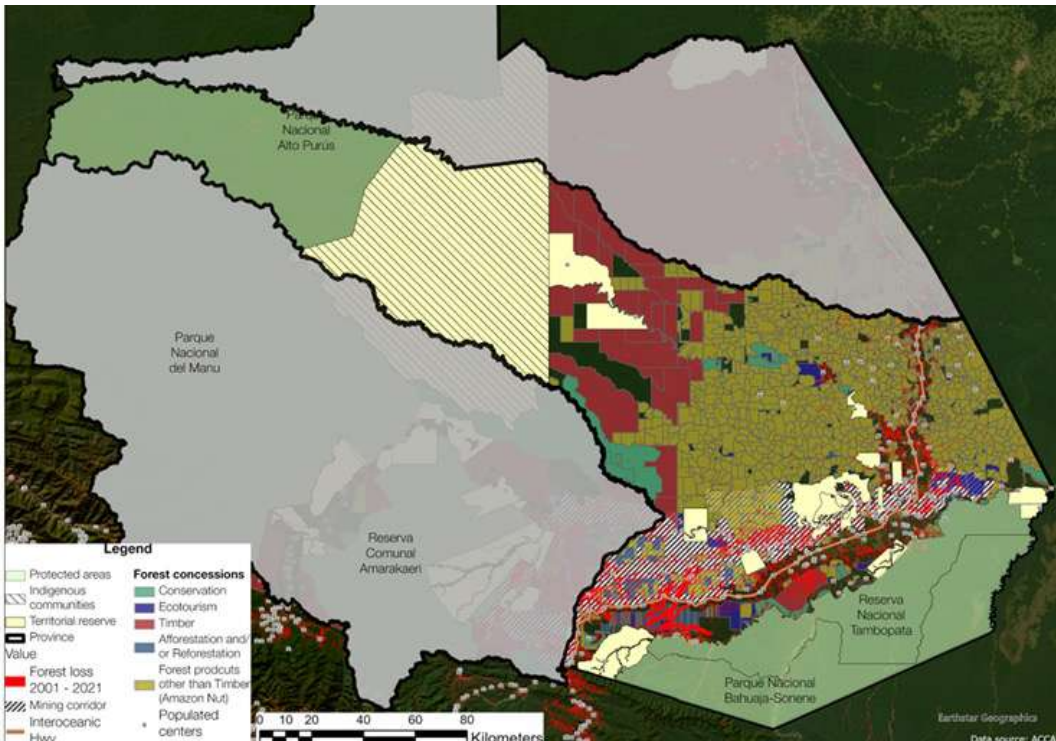


Land

- Old "primary" forests
- Secondary forests
- Rivers
- Farms (subsistence, mono-crop, AFS)
- Cattle ranches
- Roads
- Settlements (cities, towns)
- Mines (gold)



The Challenges in Madre de Dios, Tambopata



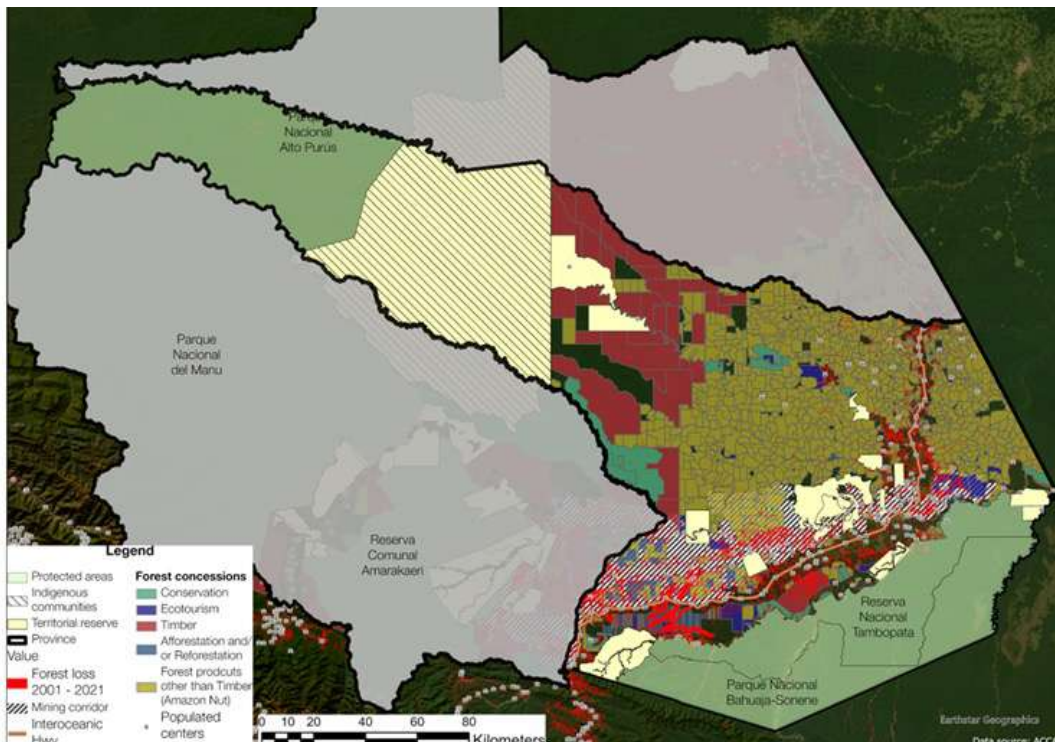
People

- Indigenous
- Old migrants
- Newer migrants

- Urbanites (commercial)
- Farmers (rural)
- Forest dwellers
- Fisher-folk
- Loggers
- Miners



The Challenges in Madre de Dios, Tambopata



Governance

- Protected Areas
- IP Territories, Communities Nations
- Concessions (NTFP, Timber, Conservation, Tourism, Mining)
- Private Lands
- IOH + Secondary roads
- Rivers



The Challenges in Madre de Dios, Tambopata

- This area is rich in cultural diversity, home to many indigenous ethnic groups, and contains large tracts of old-growth forests that host some of the world's highest levels of terrestrial species diversity and endemism.

The Challenges in Madre de Dios, Tambopata

- This area is rich in cultural diversity, home to many indigenous ethnic groups, and contains large tracts of old-growth forests that host some of the world's highest levels of terrestrial species diversity and endemism.
- The observed increasing “prosperity” is mainly concentrated in urban areas and economic sectors linked to the most unsustainable extractive activities.

The Challenges in Madre de Dios, Tambopata

- This area is rich in cultural diversity, home to many indigenous ethnic groups, and contains large tracts of old-growth forests that host some of the world's highest levels of terrestrial species diversity and endemism.
- The observed increasing “prosperity” is mainly concentrated in urban areas and economic sectors linked to the most unsustainable extractive activities.
- This unequal prosperity is accompanied by a significant transformation of the biological and social landscape, including degradation, deforestation, habitat loss, river erosion and sedimentation, changes in hydrological regimes, mercury pollution, increasing population and inequality, and decreasing safety and security.

The Challenges in Madre de Dios, Tambopata



The Challenges in Madre de Dios, Tambopata



Degraded lands

Standing forests

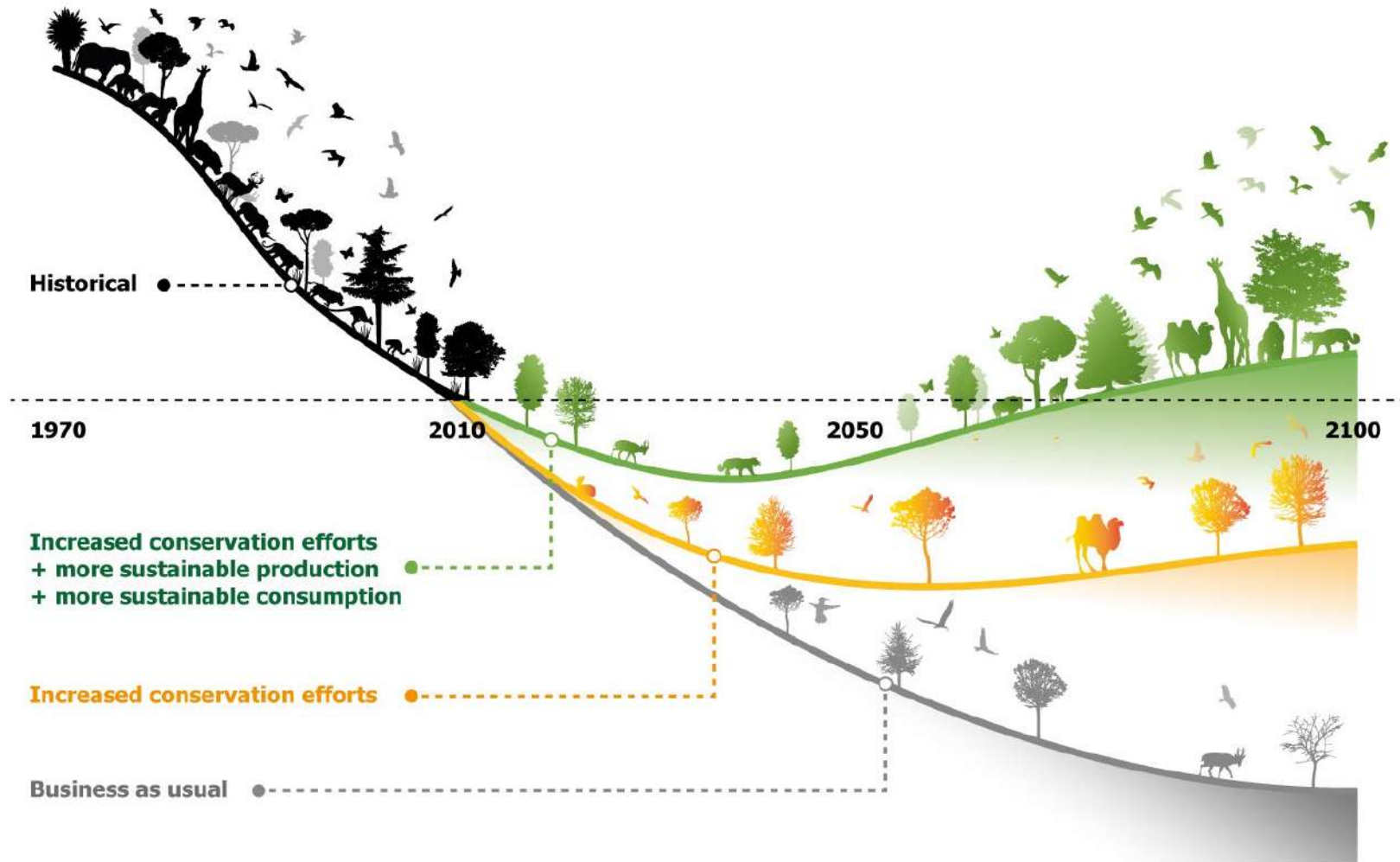


The Challenges in Madre de Dios, Tambopata

- This area is rich in cultural diversity, home to many indigenous ethnic groups, and contains large tracts of old-growth forests that host some of the world's highest levels of terrestrial species diversity and endemism.
- The observed increasing “prosperity” is mainly concentrated in urban areas and economic sectors linked to the most unsustainable extractive activities.
- This unequal prosperity is accompanied by a significant transformation of the biological and social landscape, including degradation, deforestation, habitat loss, river erosion and sedimentation, changes in hydrological regimes, mercury pollution, increasing population and inequality, and decreasing safety and security.

How can we enhance the value of standing forests and foster a multifunctional landscape in Madre de Dios?

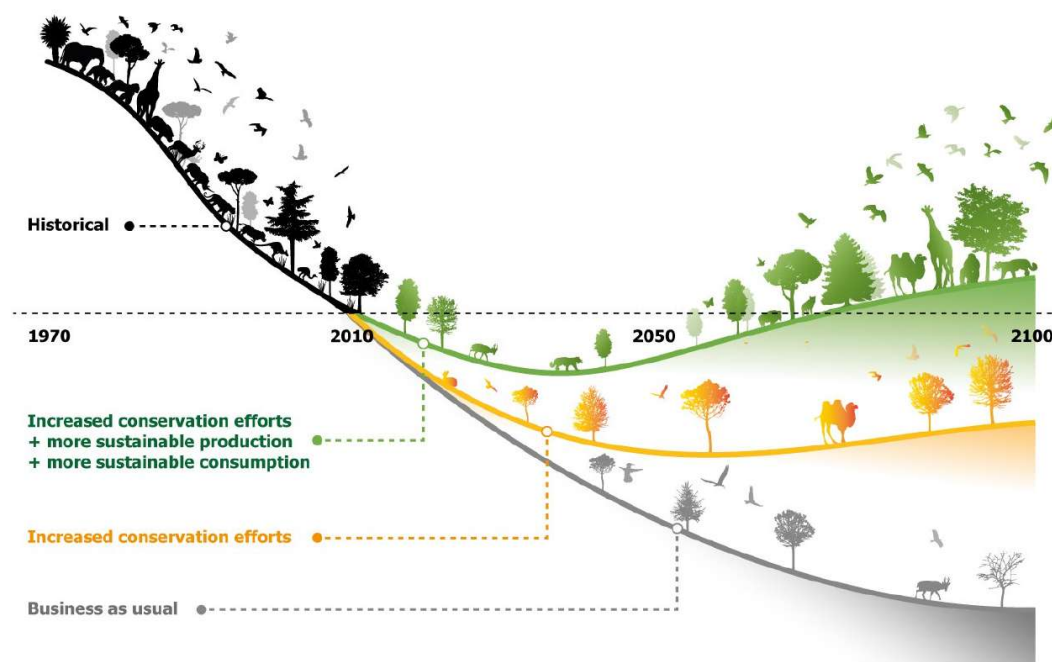
A longing for a better world than the one we have...



This artwork illustrates the main findings of the article, but does not intend to accurately represent its results (<https://doi.org/10.1038/s41586-020-2705-y>)

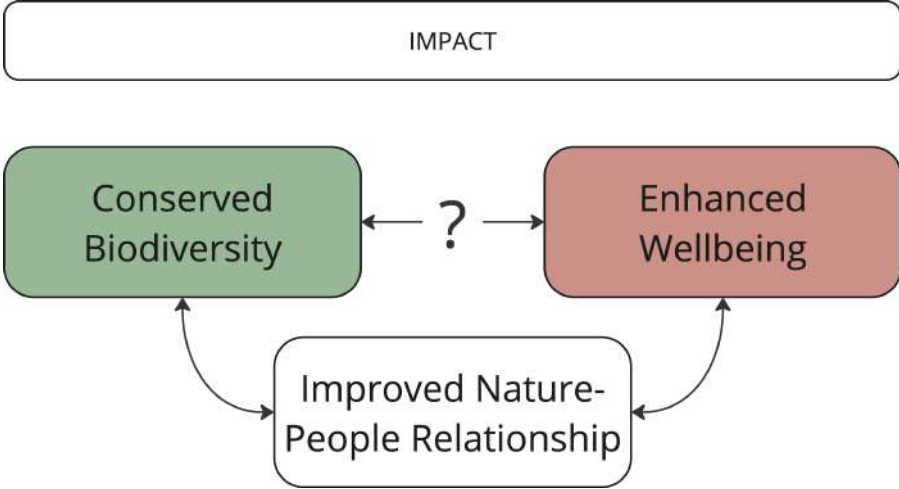
will probably require a systemic transformation

- Not only **mitigate** the adverse effects of the current regime of management and use of biodiversity...
- but also bring about a **profound change**.
- Adopt a **comprehensive vision** that encompasses the diversity of **actors, voices, institutions and knowledge**, recognising the complexity of change and
- Generate **long-term learning** (continuous evaluation) that guides strategic and effective long-term decisions.

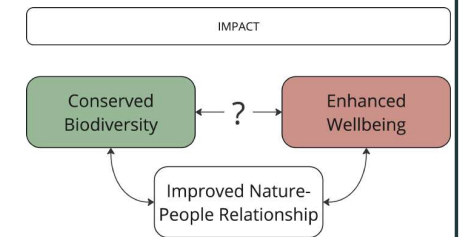
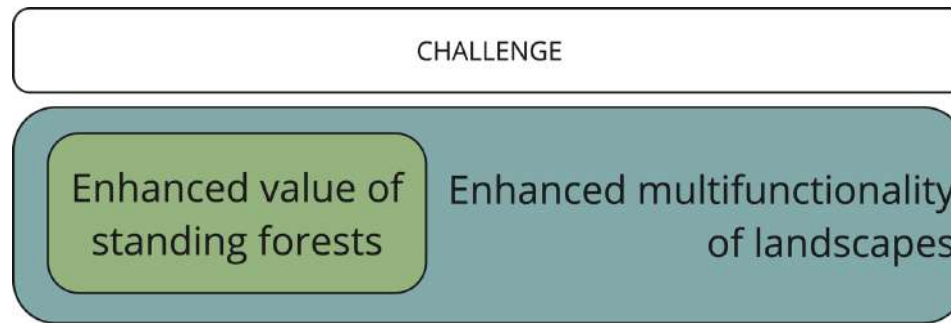


This artwork illustrates the main findings of the article, but does not intend to accurately represent its results (<https://doi.org/10.1038/s41586-020-2705-y>)

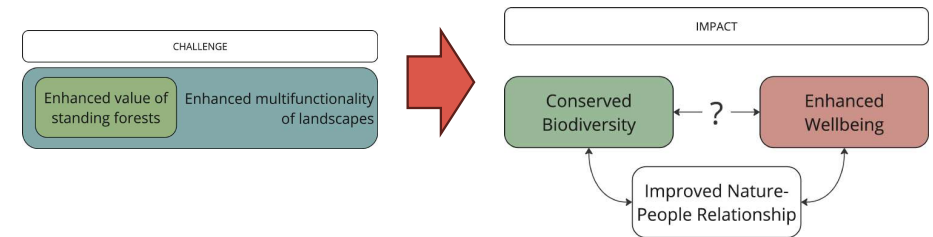
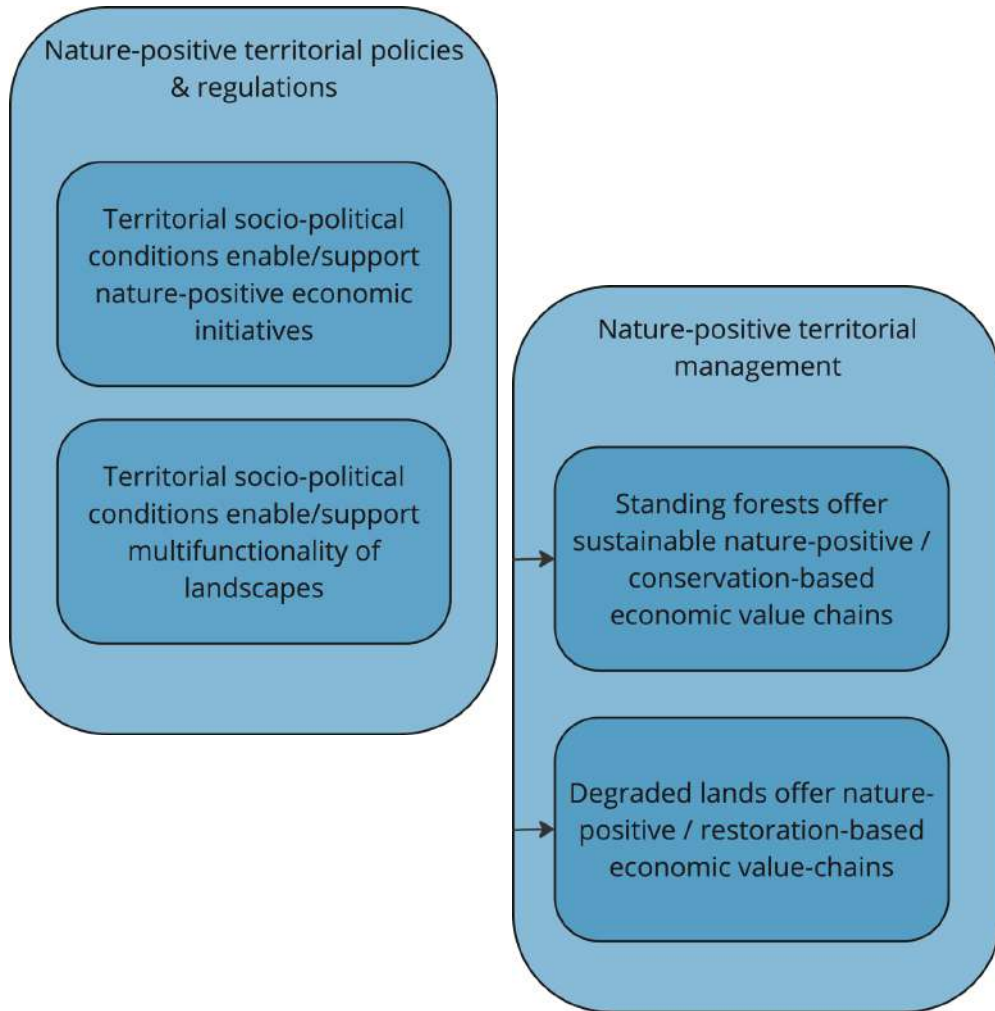
Challenge: Healthy forests for people



Challenge: Healthy forests for people



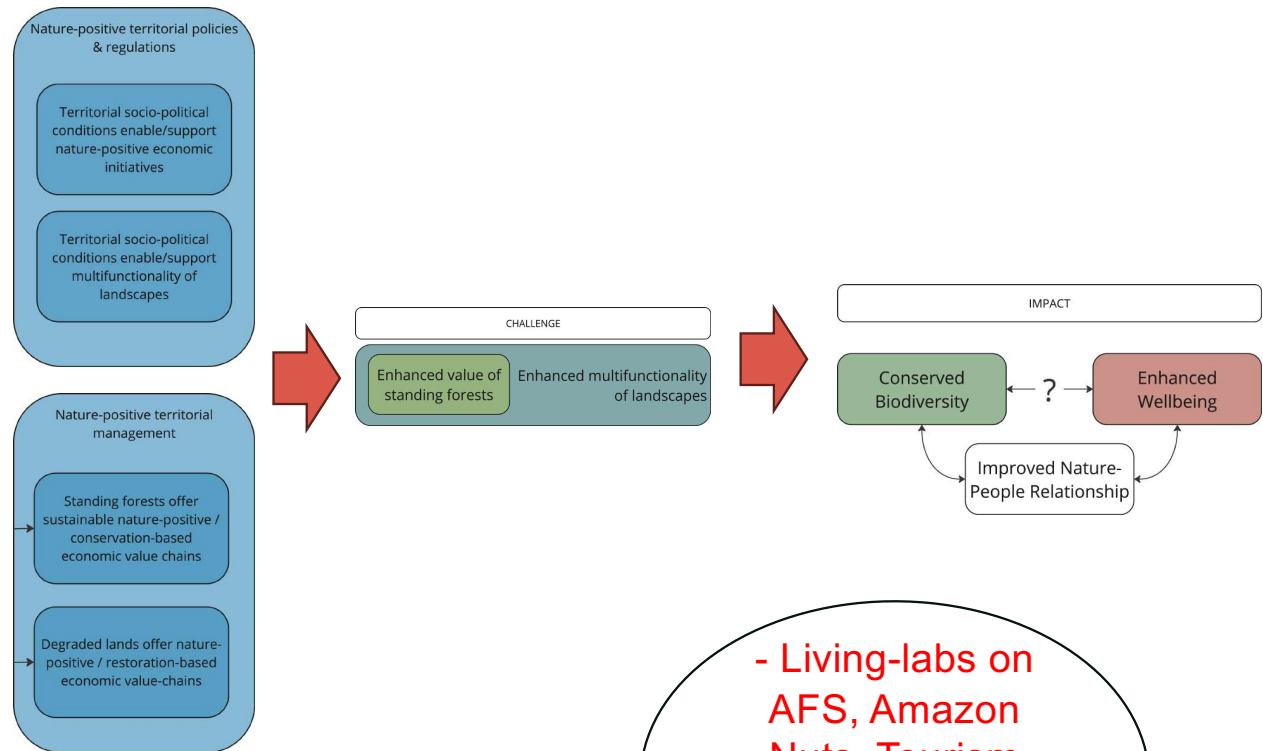
Challenge: Healthy forests for people



Challenge: Healthy forests for people

Empowering People for Conservation

- Strengthening viable & sustainable value chains based on:
 - The standing forest (Amazon Nut, Tourism, Fibres)
 - The restoration of degraded lands (AFS: Fruits, Fibres, Timber)
- Understanding how to improve practices (mining)
- Supporting capacity strengthening of talented individuals

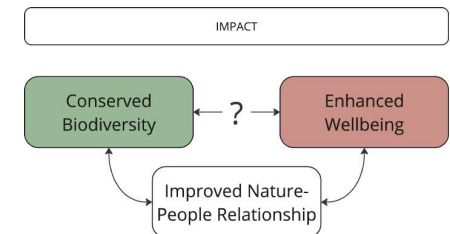
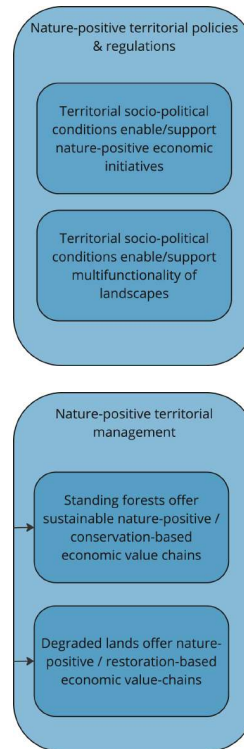


- Living-labs on AFS, Amazon Nuts, Tourism
- R&D on Natural fibres
- Research

Challenge: Healthy forests for people

Enabling Conservation at the Landscape level

- Improving evidence and accessibility to information for better territorial decision-making (NCPs & values, history of economic development in MDD, geospatial)
- Supporting the development of a territorial plan and sustainable investment projects integrating conservation and economic development
- Supporting capacity strengthening of institutions



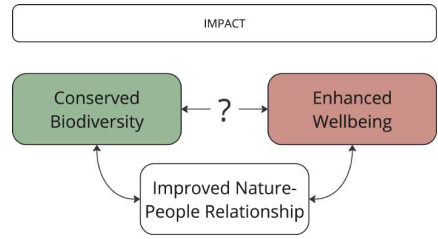
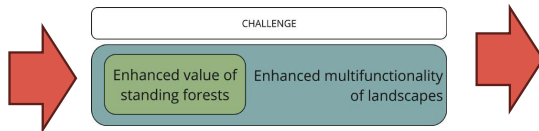
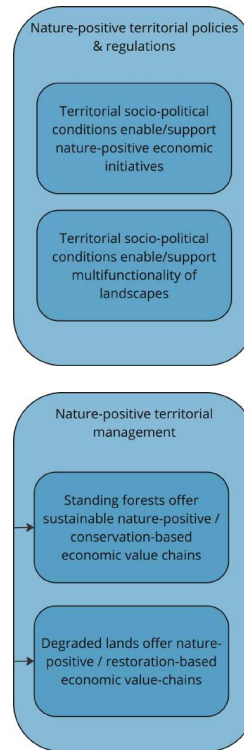
Empowering People for Conservation

- Geospatial Lab
- Tambopata Development Plan
- Investment Portfolio
- Research

Challenge: Healthy forests for people

Filling knowledge gaps

- Co-developing a SES network map of the Solutionscape and a ToC detailing pathways for system transformation
- Generating pertinent socio-economic and socio-ecological information for the territory (SNA, relationship values, scenario planning, etc)
- Coalescing networks and alliances for a sustainable future

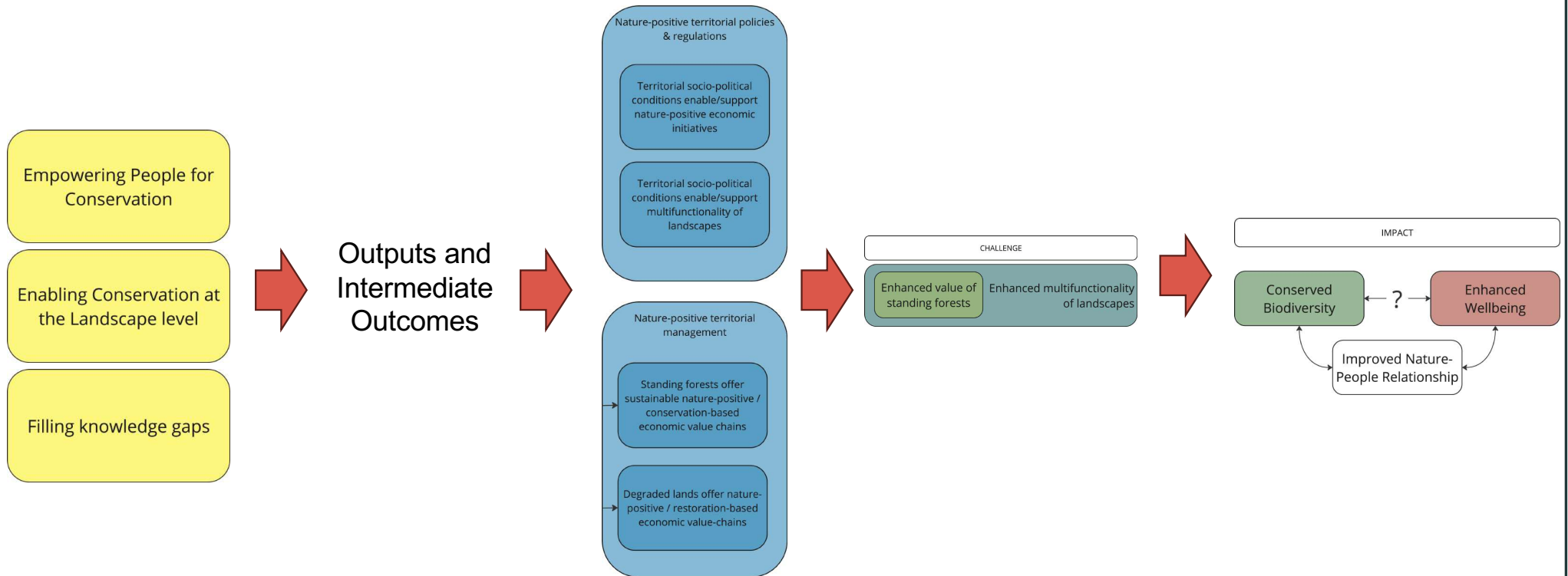


- Research
- MdD Networks
- Communications
- Innovation Plan

Empowering People for Conservation

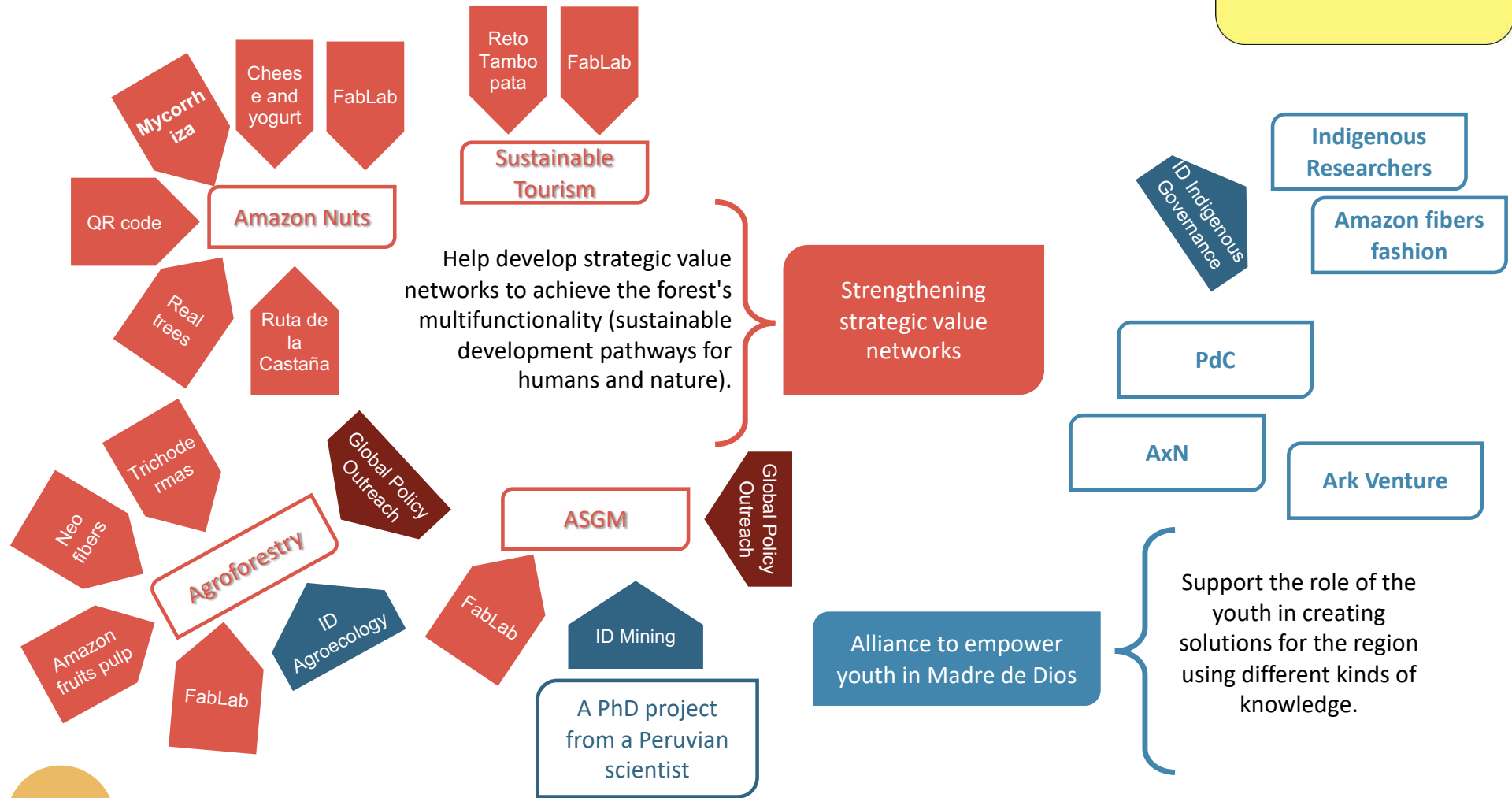
Enabling Conservation at the Landscape level

Challenge: Healthy forests for people



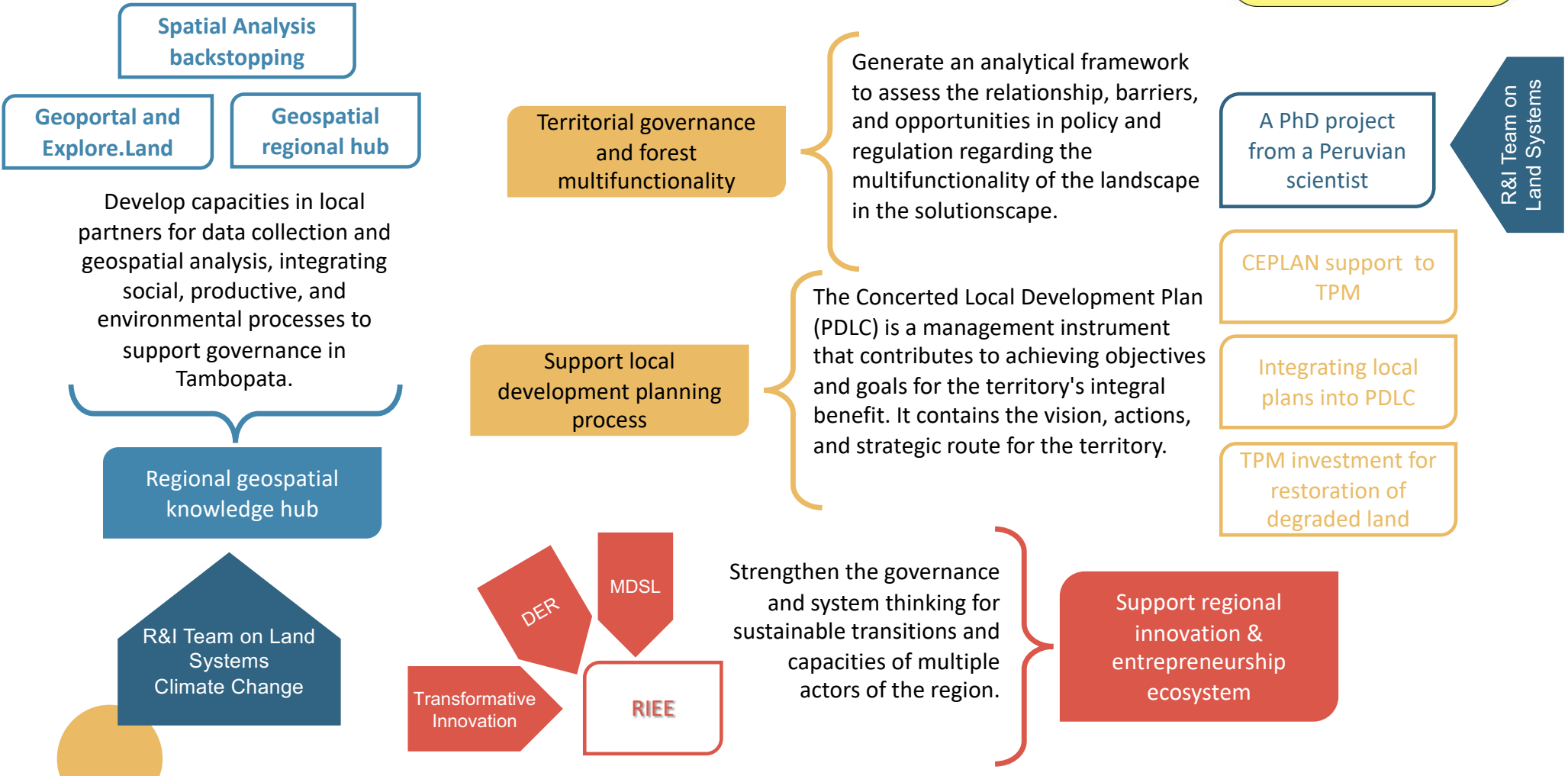
What do we know now? What have we done?

Empowering People for Conservation

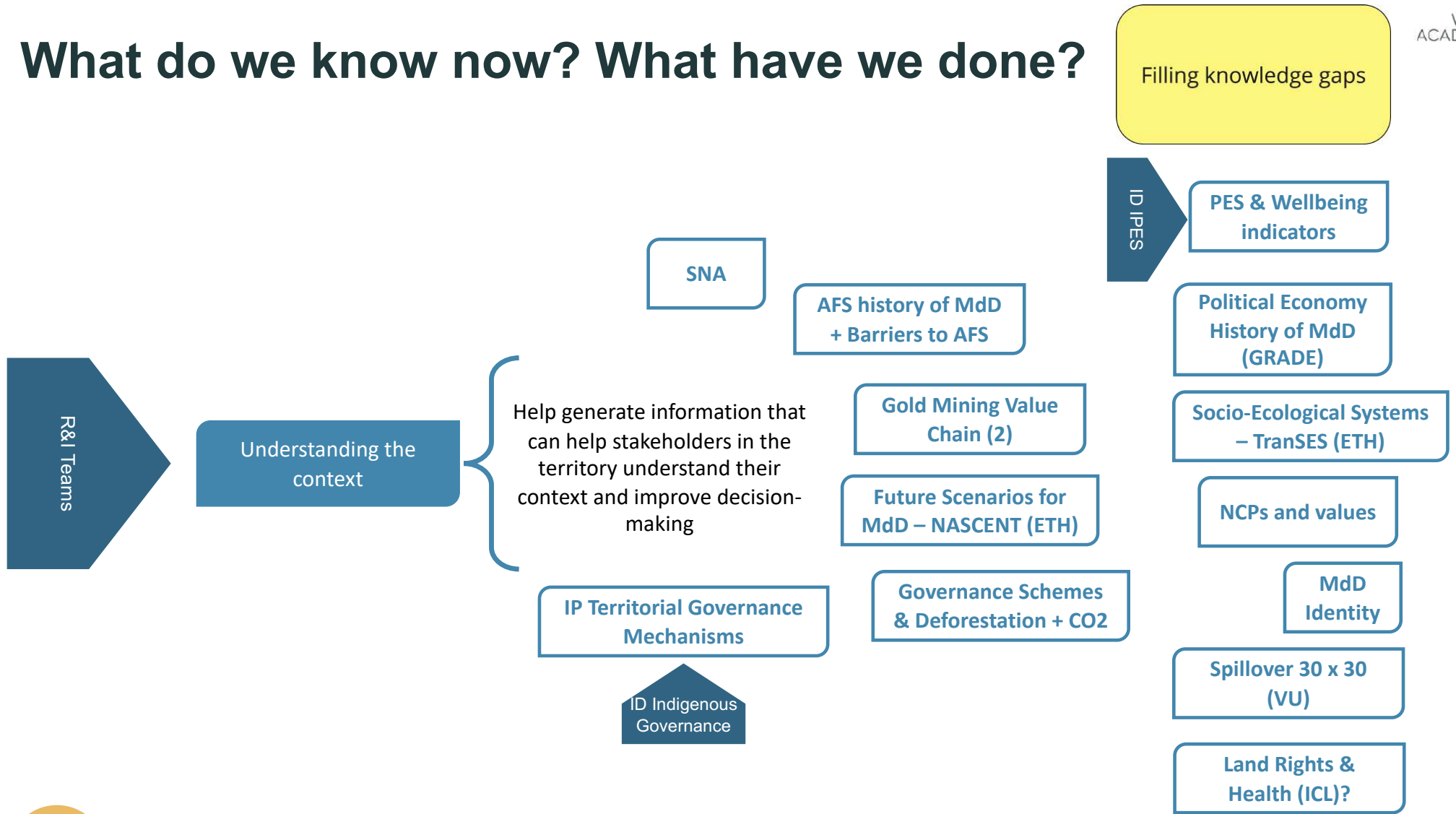


What do we know now? What have we done?

Enabling Conservation at the Landscape level



What do we know now? What have we done?



What do we know now? What have we done?



What do we know now? (after 2 years)

- There aren't many options (currently) when talking about sustainable economies in standing forests (i.e., Amazon Nut, Tourism, Fibres, Timber, Palm fruits, PES?).
- AFS based on Cacao has not worked. Highly diversified AFS (i.e., multi-strata AFS, regenerative cattle-ranching) are needed to render degraded lands economically viable (PES?).
- Gold mining is impossible to stop (i.e., Global demand, price, and markets). Best practices and no-go areas are the best we can do.
- The local government must lead the transformation and create incentives for sustainable and just economies.



Systems transformation is possible and necessary

What do we know now? (after 2 years)

- Many actors (local, national, regional, and global) in the region could benefit from collaboration.
- We have created safe spaces for stakeholders to discuss the context and co-create potential solutions.
- We still need to understand many aspects of the context, so there is much room for experimentation and learning.
- We have created a nice setting for researchers (basic, applied, transdisciplinary, transformative)



This is an invitation

What do we know now? (after 2 years)

Systems transformation is possible and necessary



This is an invitation



Together, we create a
new relationship with
nature.

Thank you.