

# Park-People Relationships - human perceptions of protected areas within the context of visitation

Friday, 04/06/2025

Prof. Dr. Martin Balas



Hochschule  
für nachhaltige Entwicklung  
Eberswalde



# Why against protected areas?



source: Mayer 2018



# Changed relationship between locals & PA

---

- **social support** is needed to ensure an adequate, and well-managed network of PA
- PA will only **fulfil their aspirations if their operation is linked to socio-economic development** (IUCN, 1994)
- **paradigmatic shift in the understanding of nature conservation** from the protection of nature “from people” to its conservation “with people”
- socio-cultural issues related to protected areas (PAs) are a **decisive precondition** for successful nature and biodiversity protection
- **strict protection measures** can only be implemented if these measures are **supported by the population** of the adjacent areas
- **political pressures** fuelled by negative local attitudes towards PAs could lead to the **softening or delaying** of protection policies or even **stop the designation** of PAs

# „Park-People-Relationship“ (PPR) vs. Acceptance

---

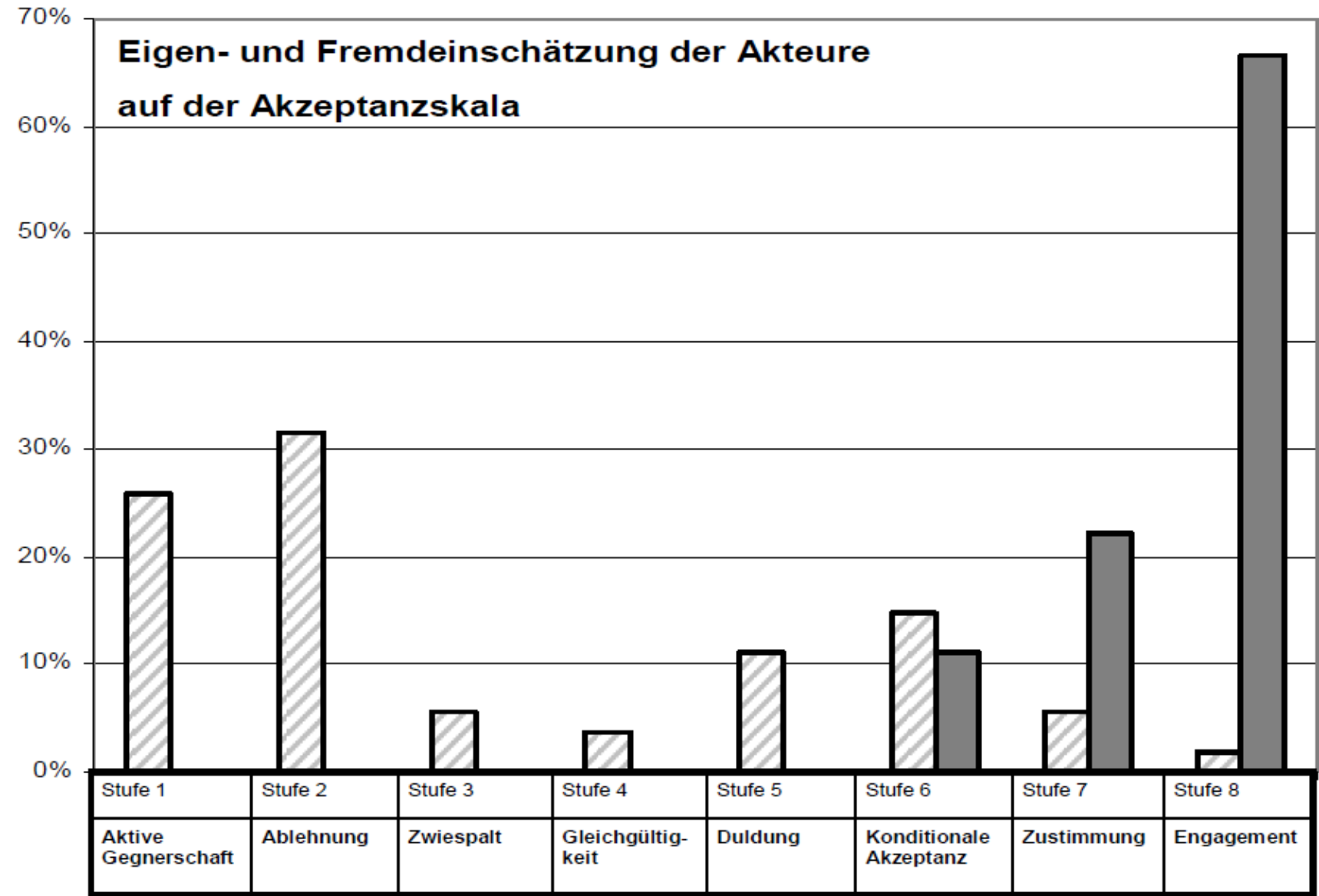
## Acceptance



- A **latent variable** predominantly **operationalized as an attitude**, which, unlike values and norms, can be more volatile in space and time
- There is **no such thing as general acceptance** of an object
- There is always **a scale from rejection** (aversion, resistance) through neutrality (indifference) **to approval** or identification
- should not be not limited to pure polarization between approval and rejection of a situation, but rather **examines its causes**



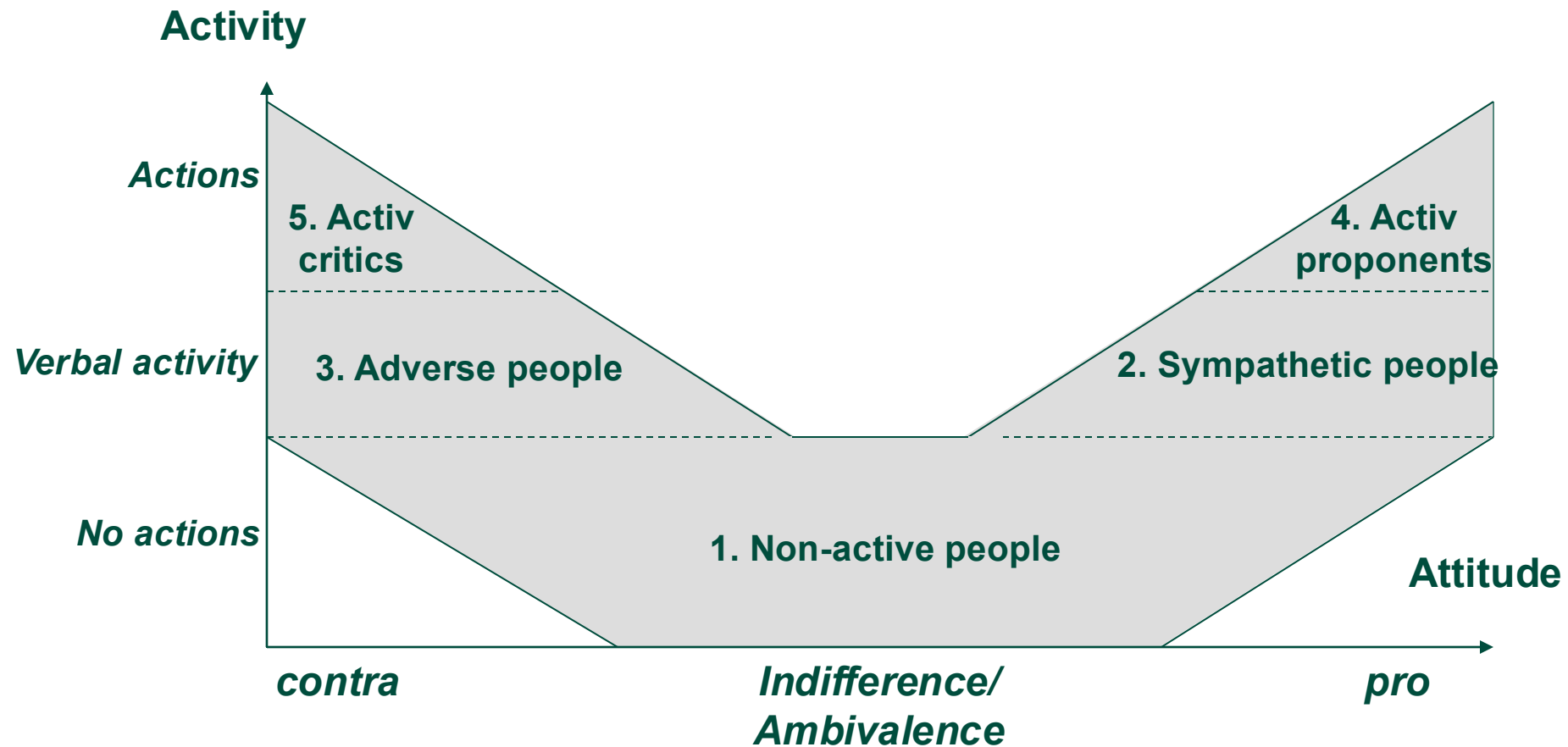
**Park-People Relationship as a more comprehensive term**

# Acceptance-scale by Sauer



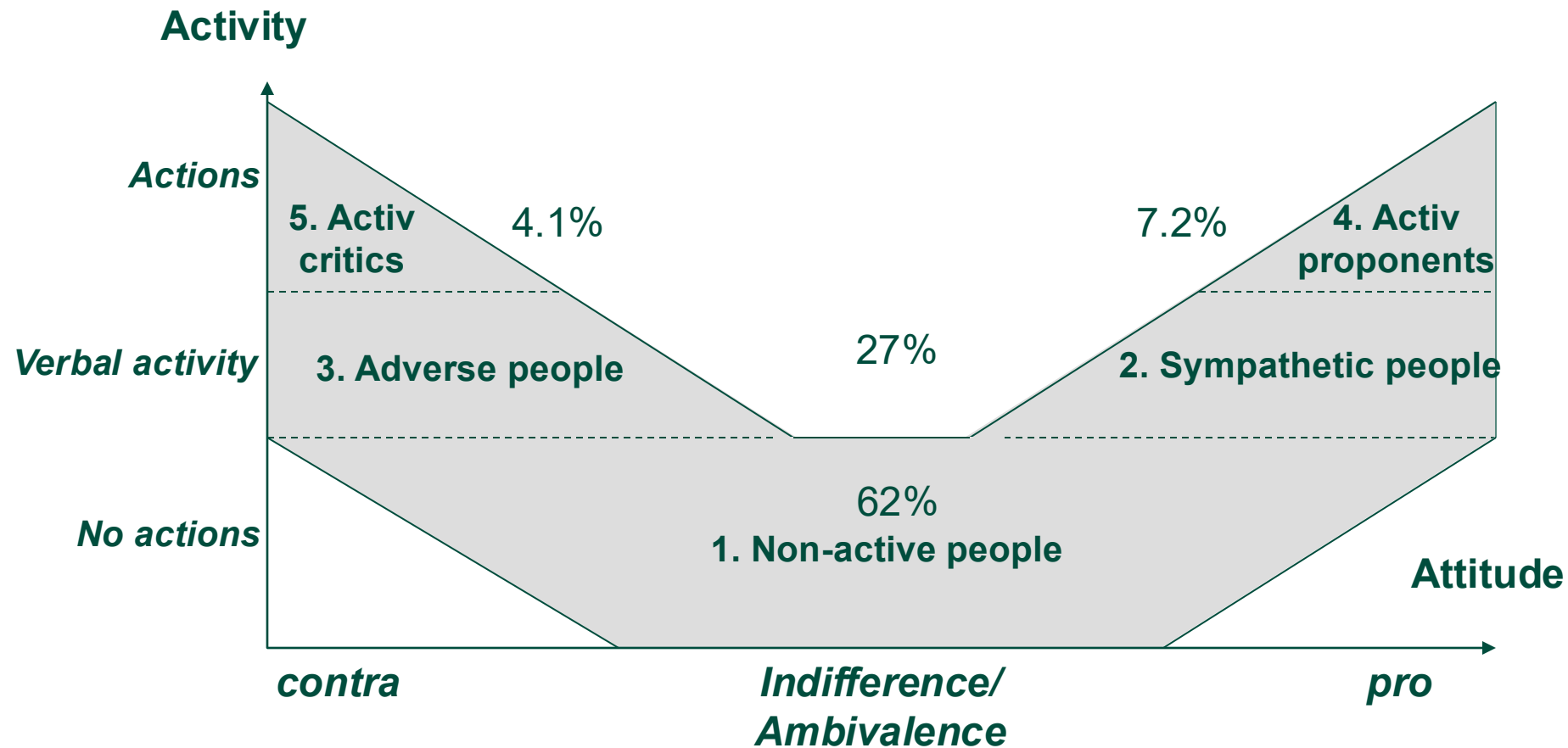
 Betroffene und ihre Verbände  
 Naturschutzvertreter

# Acceptance levels by Liebecke





# Acceptance levels – national park Bavarian Forest



# Why aversion to PA?

---

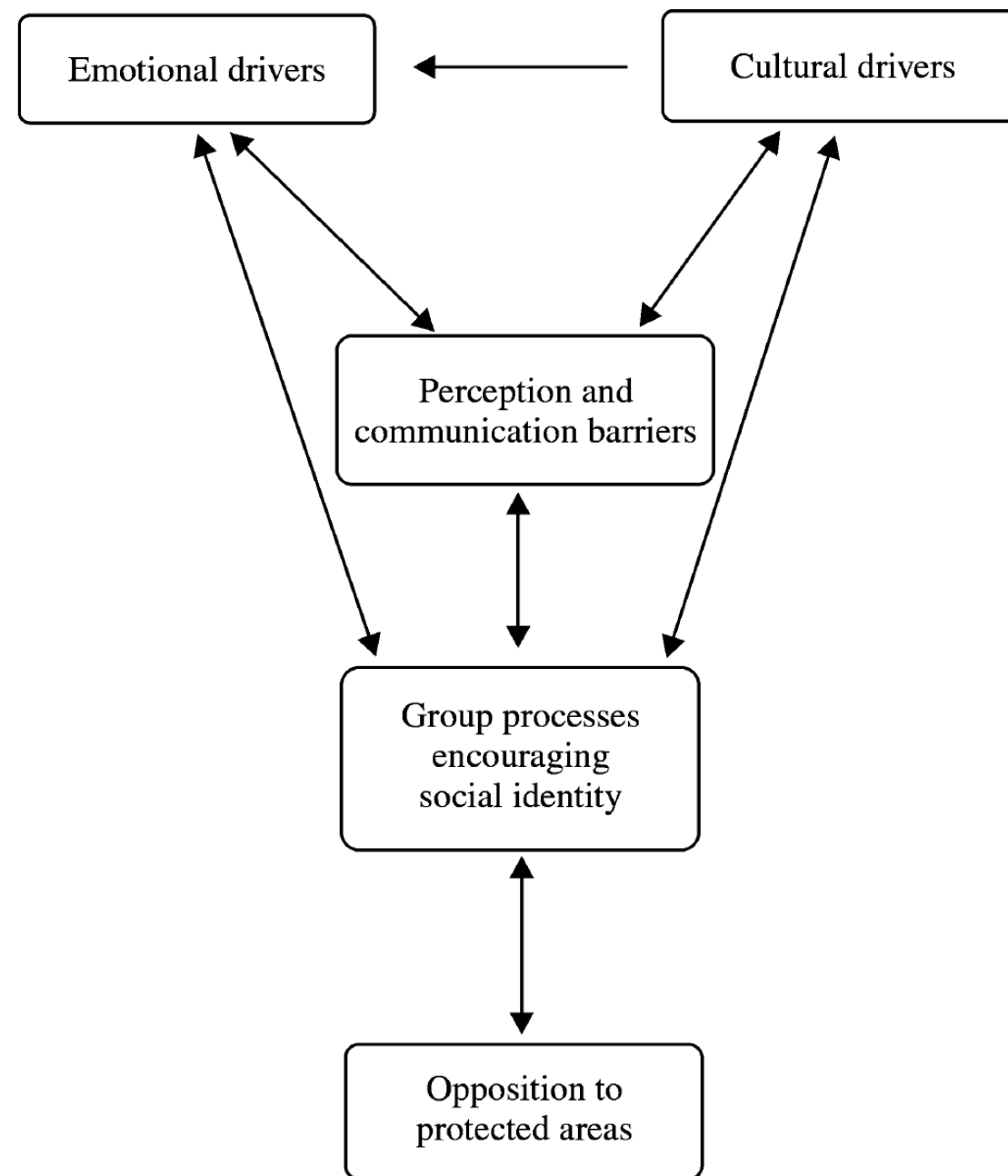
- **Economic disadvantages** or unfavorable financial and organizational framework conditions
- **Lack of familiarity** with nature conservation goals
- Contradictory **values and beliefs**
- Forms of **communication** that are experienced by those involved as unsatisfactory or authoritarian
- **Fear** of behavioral restrictions, paternalism, and external control





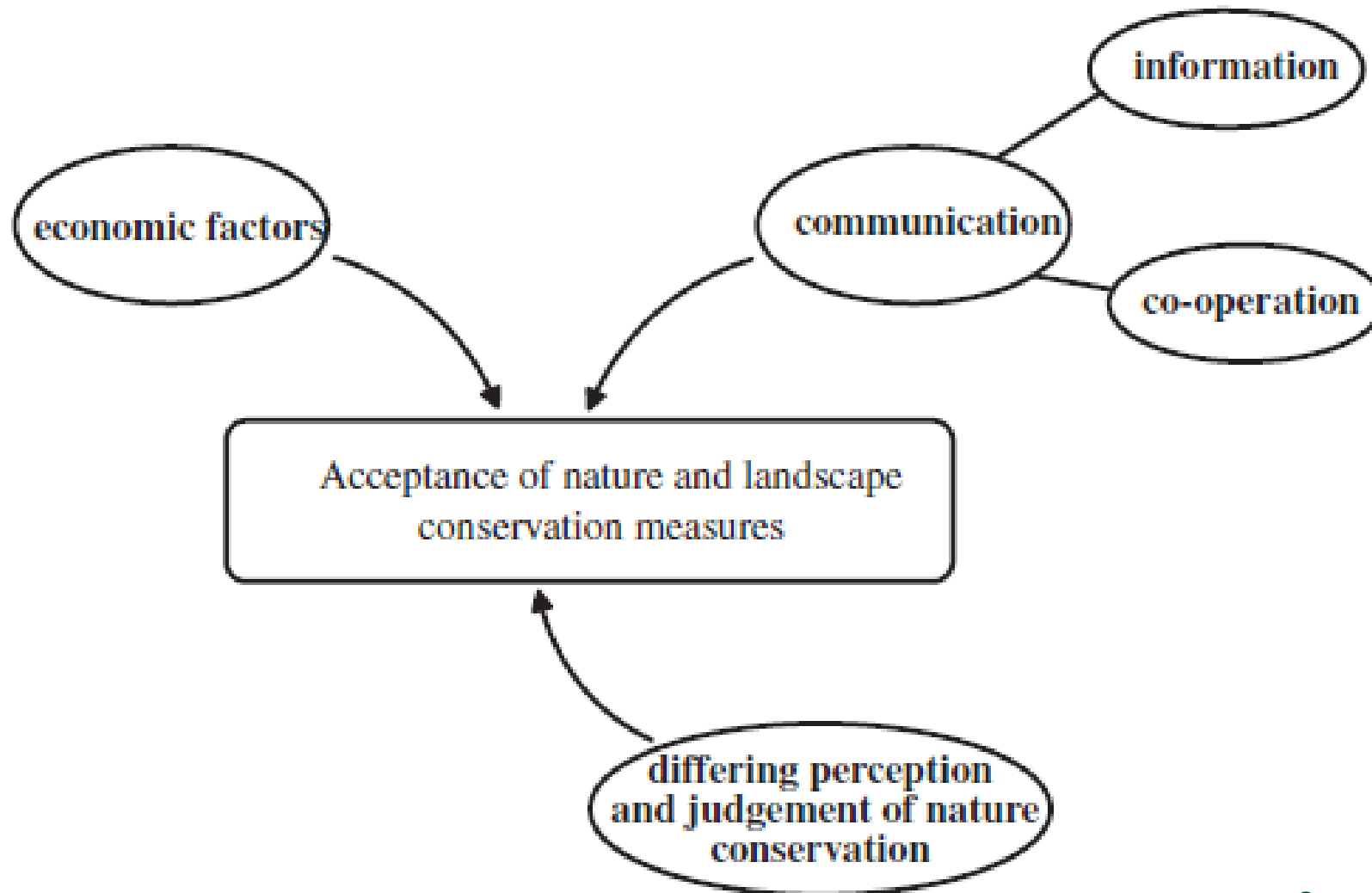
# Why aversion to PA?

## Social barriers



# Influence factors on PPR

---



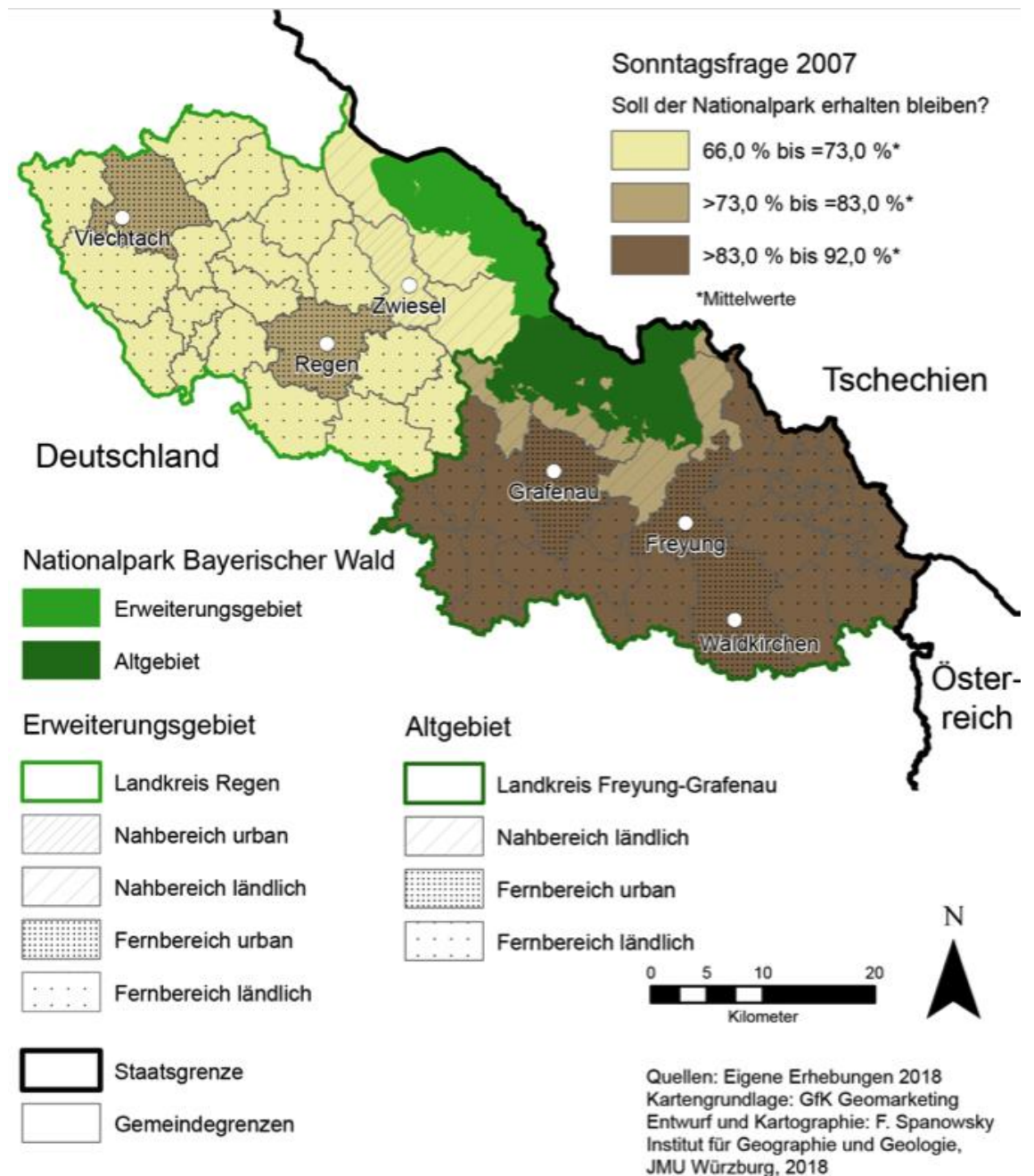
# How to measure PPR

---

- **"Acceptance crater"** (NIMBY phenomenon)
  - **"Mayor's question"** (continuation of the protected area yes/no; express support or opposition today)
  - **Direct question** about overall attitudes
  - **Aggregation** of several attitude questions
- 
- **There is a lack of multivariate models to test the relative importance of influencing factors**

# How to measure PPR

## "Acceptance crater" Bavarian Forest



# Further influencing factors

---

## **“New” inhabitants(to the region) vs. Locals**

- Immigrants have more positive opinions about PA management

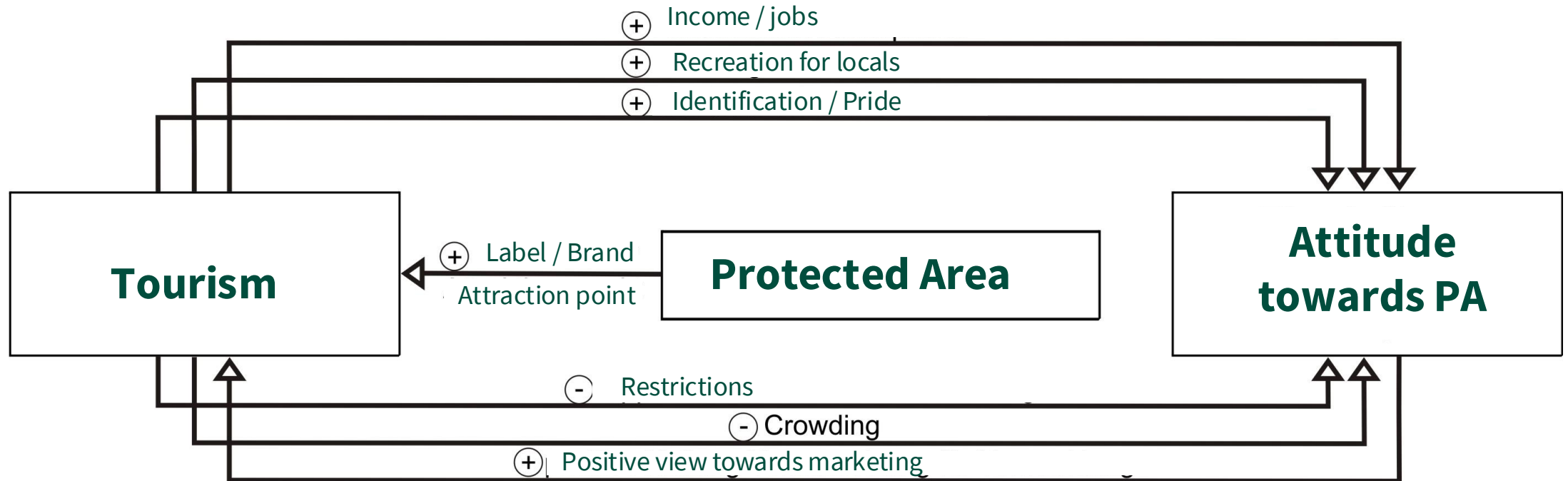
## **Income/Education**

- The higher the income and education, the higher an acceptance of PA management

## **Age**

- Older people have a more critical attitude toward PA management and tourism development

# Relationship Tourism & PPR



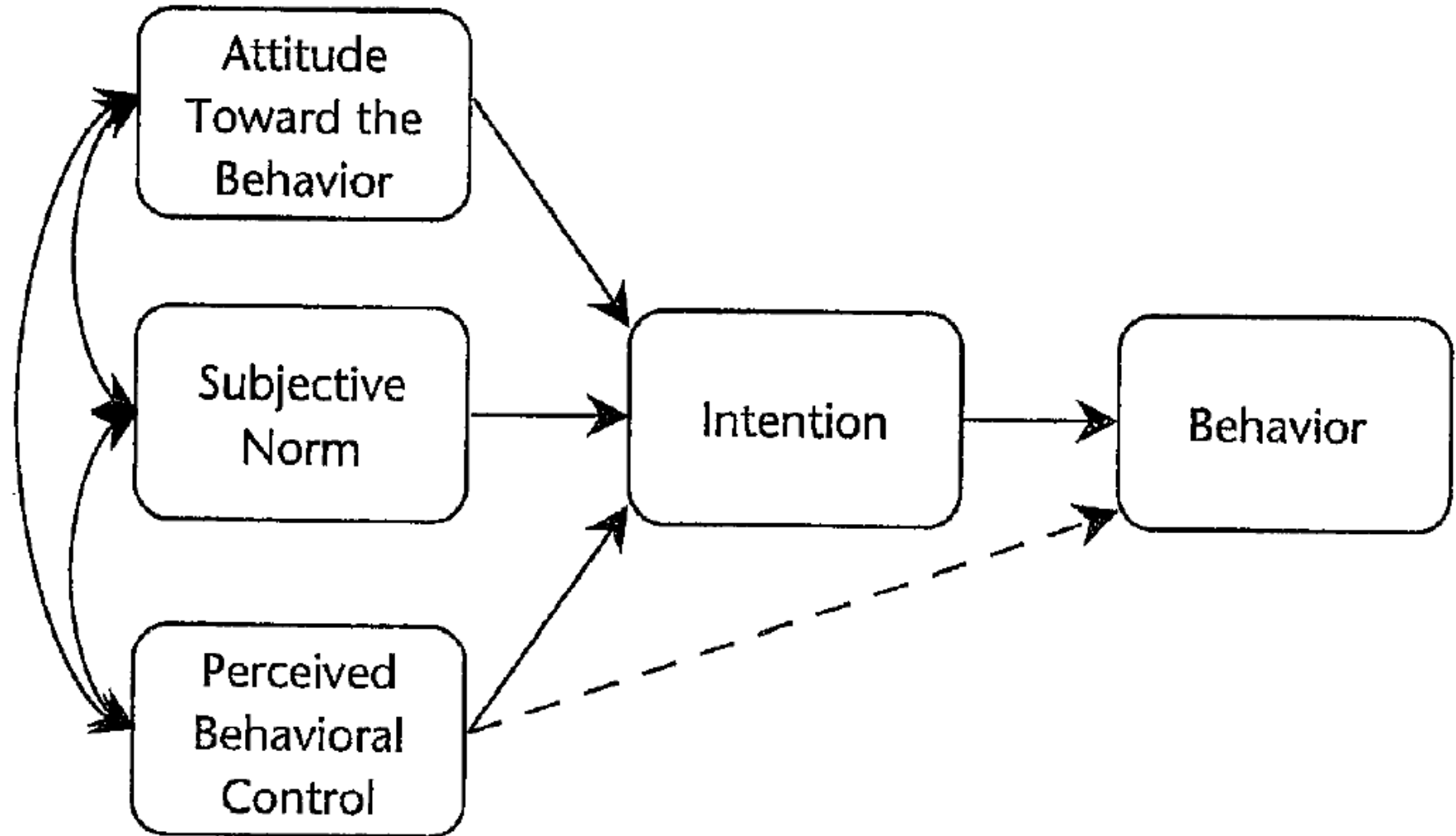


# Relationship Tourism & PPR

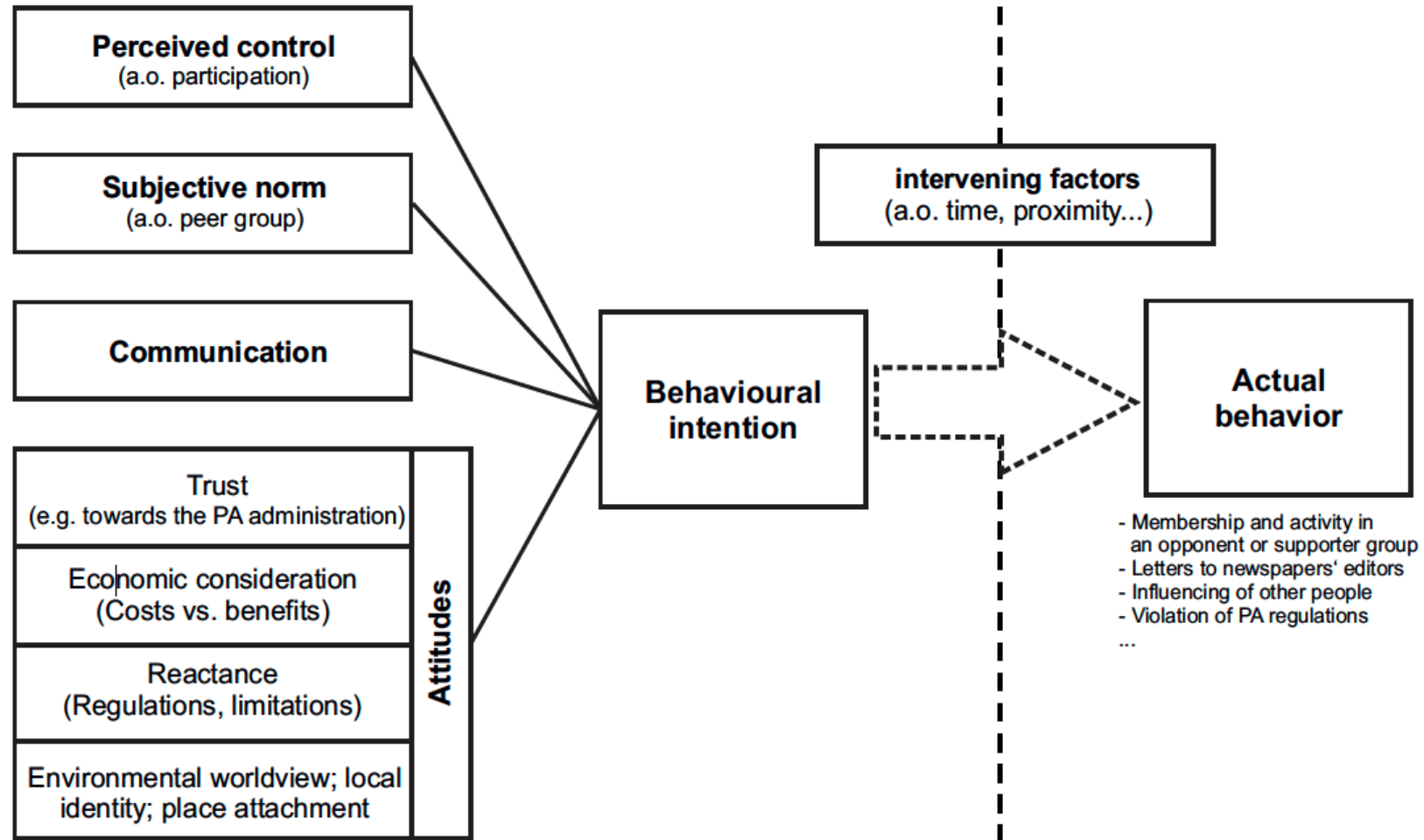
---



# Advancement of PPR-analysis



# Advancement of PPR-analysis



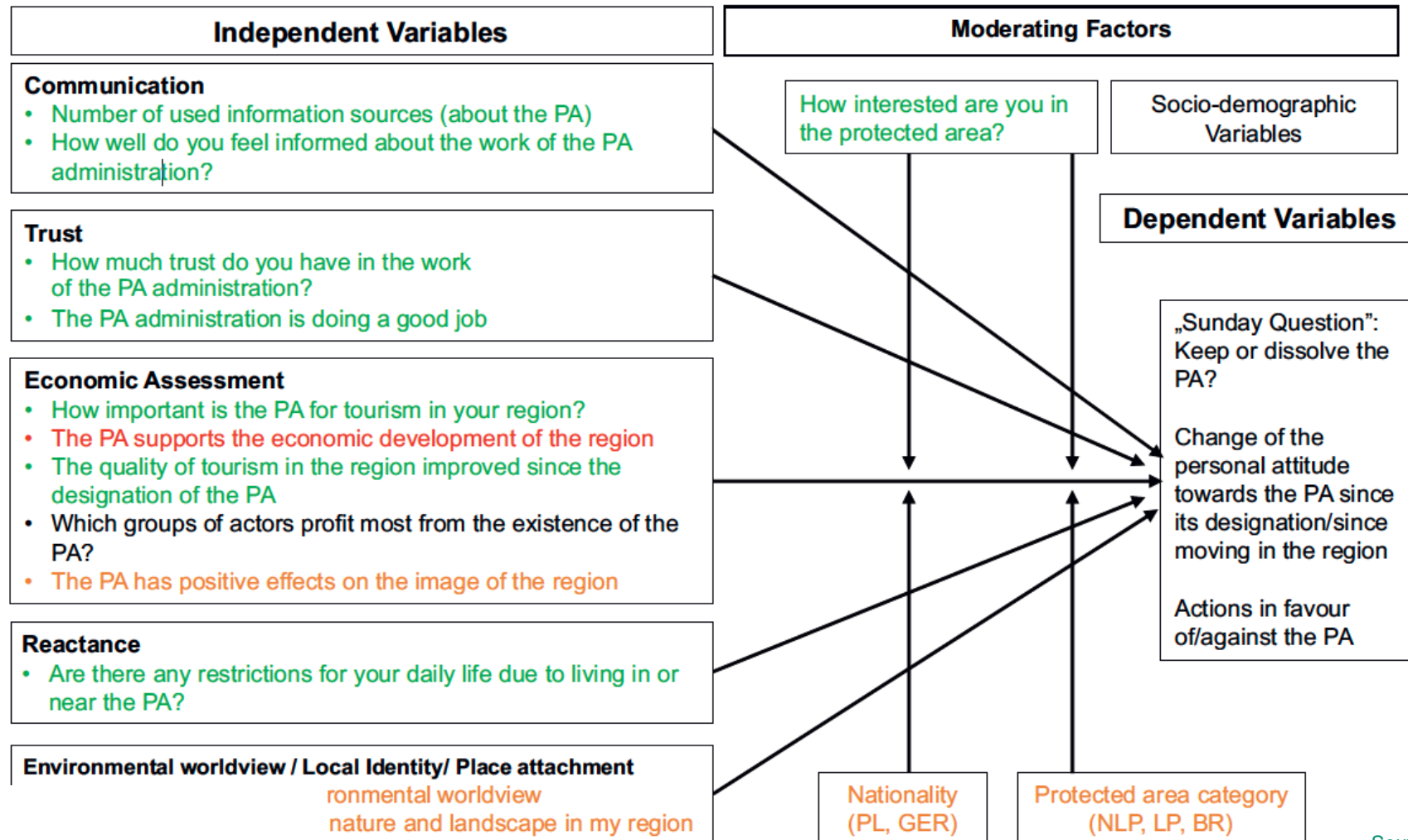
# Advancement of PPR-analysis

- Representative, standardized, quantitative telephone surveys in 14 protected area regions in the Euroregion in 2019 and 2020
- Between 370 and 403 interviews per area, a total of 5,547
- Based on existing "acceptance" studies in Germany
- Population: Residents of the survey areas (>18 years old)
- Weighting: by age and gender
- 43 questions in three question blocks





# Advancement of PPR-analysis



# Advancement of PPR-analysis

---

- Communication, trust, economic viability and reactance statistically influence the personal interest & attitudes towards PA
  - Different protection regimes affect the level of awareness of protected areas
  - Low tourism intensity also affects the awareness of positive economic effects of tourism in PA
- 
- Attitudes & behaviour of local population towards PA (& tourism) relate to a combination of different attributes
  - A single parameter would miss the overall picture



# Exercise – LEGO Serious Play!

---