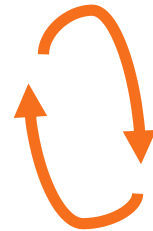




Eberswalde University  
for Sustainable  
Development

# Governance, Administration and Management of Biosphere Reserves and Protected Areas

Dr. Ana Filipa Ferreira & Lena-Marie Mutschler  
March 2024



**2 Intro: the definition of key terms**

**3 Organisation forms of Biosphere Reserves (BRs) and Protected Areas (PAs)**

**4 Weber's characteristics of bureaucracy**

**5 Good government and good governance**

**6 Landscape governance legal foundation**

**7 Landscape governance fragmentation**

# 7 Landscape governance fragmentation

Tabelle 2: Behördliche Zuständigkeiten der Nationalparkverwaltungen in Deutschland (Stand Februar 2013)

Nationalpark	UNB	ONB	ÖNB	UFB	OFB	UJB	OJB	OrdB	Gem	UFiB	NSFB
Schleswig-Holsteinisches Wattenmeer	x	x									
Niedersächsisches Wattenmeer	x										
Hamburgisches Wattenmeer			x								
Vorpommersche Boddenlandschaft	x			x				x			
Jasmund	x			x				x			
Müritz	x			x				x			x
Unteres Odertal											
Harz	x			x		x					
Hainich	x							x			
Kellerwald-Edersee	x			x		x				x	
Eifel				x							
Sächsische Schweiz											x
Bayerischer Wald				x		x					
Berchtesgaden				x		x					

x behördliche Zuständigkeit  
 UNB: Untere Naturschutzbehörde  
 ONB: Obere Naturschutzbehörde  
 ÖNB: Oberste Naturschutzbehörde  
 UFB: Untere Forstbehörde  
 OFB: Obere Forstbehörde

UJB: Untere Jagdbehörde  
 OJB: Obere Jagdbehörde  
 OrdB: Ordnungsbehörde  
 Gem: Gemeinde  
 UfiB: Untere Fischereibehörde  
 NSFB: Naturschutz-Fachbehörde

Quelle: Nationalparkverwaltungen

What degree of governance fragmentation is desirable for a Biosphere Reserve?

# Multilevel governance

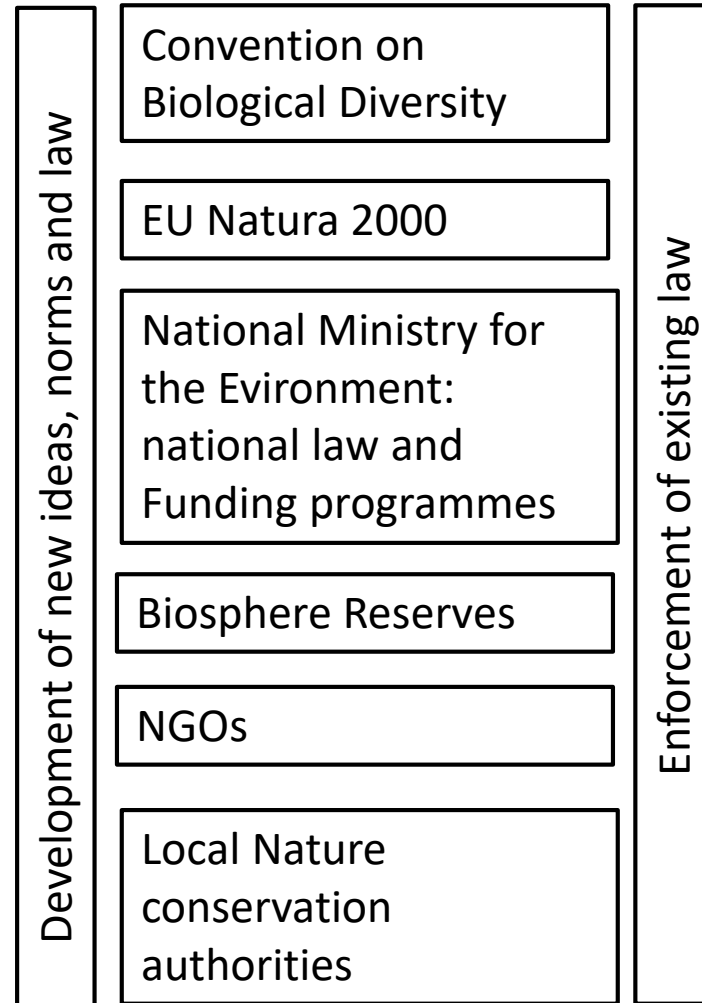
Interacting authorities on global, national, regional, local level

How are problems framed in terms of:

1. spatial scale and
2. level of political jurisdiction? (Biermann & Rakhyun 2020)

→ What is the appropriate scale and level for a given environmental problem?

Multiple multi-directional interactions in Biodiv governance



Biermann, F./Rakhyun, E.K. (2020). *Architectures of Earth System Governance*. Setting the scene. In: Biermann, F. & Kim R.E. (2020). *Architectures of Earth System Governance*. Cambridge University Press. (1-34).

# Governance fragmentation

- Fragmentation: „**continuous, non binary concept: more or less fragmented but not fully**
- Comparable variable: governance architectures can be compared regarding their degree of fragmentation
- Can be assessed in comparative research across policy areas and over time“ (Biermann et al. 2020, 159-162)
  
- Fragmentation as independent variable: **what are the effects of fragmentation?**
- Fragmentation as dependent variable: **why is there the degree of fragmentation that we observe?**

Biermann, F./vanDriel, M./Vijge, M.J./Peek, T. (2020). Governance Fragmentation. In: Biermann, F. & Kim R.E. (2020). Architectures of Earth System Governance. Cambridge University Press. (158-179).

# Governance fragmentation

Typology of Fragmentation of Governance Architectures.

	<i>Synergistic</i>	<i>Cooperative</i>	<i>Conflictive</i>
Institutional integration	One core institution, with other institutions being closely integrated	Core institutions with other institutions that are loosely integrated	Different, largely unrelated institutions
Norm conflicts	Core norms of institutions are integrated	Core norms are not conflicting	Core norms conflict
Actor constellations	All relevant actors support the same institutions	Some actors remain outside main institutions, but maintain cooperation	Major actors support different institutions

Table: Biermann et al. 2009, 19

Table: Bierman, F./Pattberg, P./vanAsselt, H. (2009). The Fragmentation of Global Governance Architectures: A Framework for Analysis. Global Environmental Politics, Volume 9, Number 4, November 2009, 14-40.

# Norm conflicts

## **Waterway authority**

Federal authority

Focus on:  
Shipping conditions



<https://www.nationalpark-unteres-odertal.eu/grenzueberschreitend/>

## **Biosphere Reserve/National Park**

State authority (BB)

Focus on:  
Nature conservation  
Habitats depend on river



# Scale misfit

*“(...) borders and scale are both materially and socially constructed”* (Reed & Bruyneel 2010: 647).

## Scale

= *“spatial category that affects the construction of models and the transfer of results across levels of observation”* (Reed & Bruyneel 2010: 647)



Reed, M. G., & Bruyneel, S. (2010). *Rescaling environmental governance, rethinking the state: A three-dimensional review*. *Progress in human geography*, 34(5), 646-653.

# Scale misfit

Physical geographers, natural scientists perspective:

“the temporal and/or spatial range and magnitude of a process or observation” (Silver 2008: 922)

**VS.**

Human geographers, social scientists perspective:

“social organization and the interactions between levels of organization” (Silver, 2008).

A relationship that is “continuously being defined, contested, and reconstructed based on power relations between actors across many political and economic levels” (Silver 2008: 925).

# Scale misfit

## SCALE MISFIT IN ECOSYSTEM SERVICE GOVERNANCE AS A SOURCE OF ENVIRONMENTAL CONFLICT

*“... assess the scales at which ecosystem services are supplied, demanded, and governed and discuss scale misfits in relation to historical conflicts over access to ecosystem services.”*

*“Our results suggest that multilevel governance regimes that promote coordination and institutional diversity across scales while respecting local sovereignty over ecosystem management are more likely to prevent environmental conflicts and to produce better outcomes regarding the long-term sustainable use of ecosystem services.”*

Gómez-Baggethun, E., Kelemen, E., Martín-López, B., Palomo, I., & Montes, C. (2013). *Scale misfit in ecosystem service governance as a source of environmental conflict*. *Society & Natural Resources*, 26(10), 1202-1216.

# Scale misfit

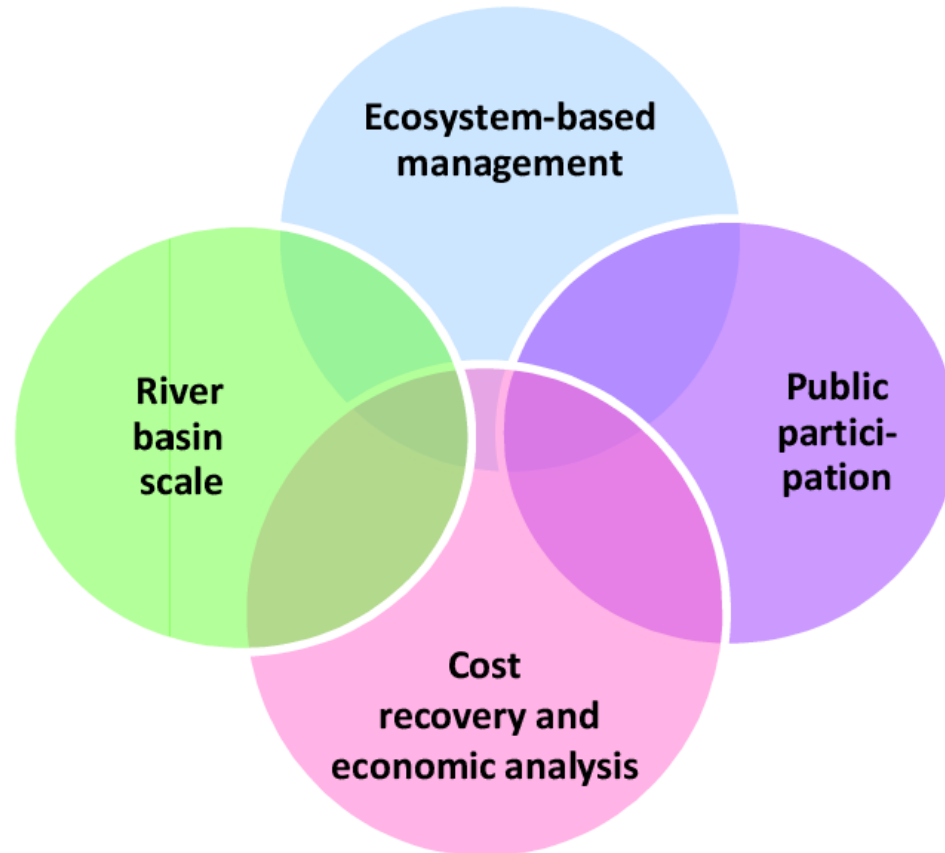
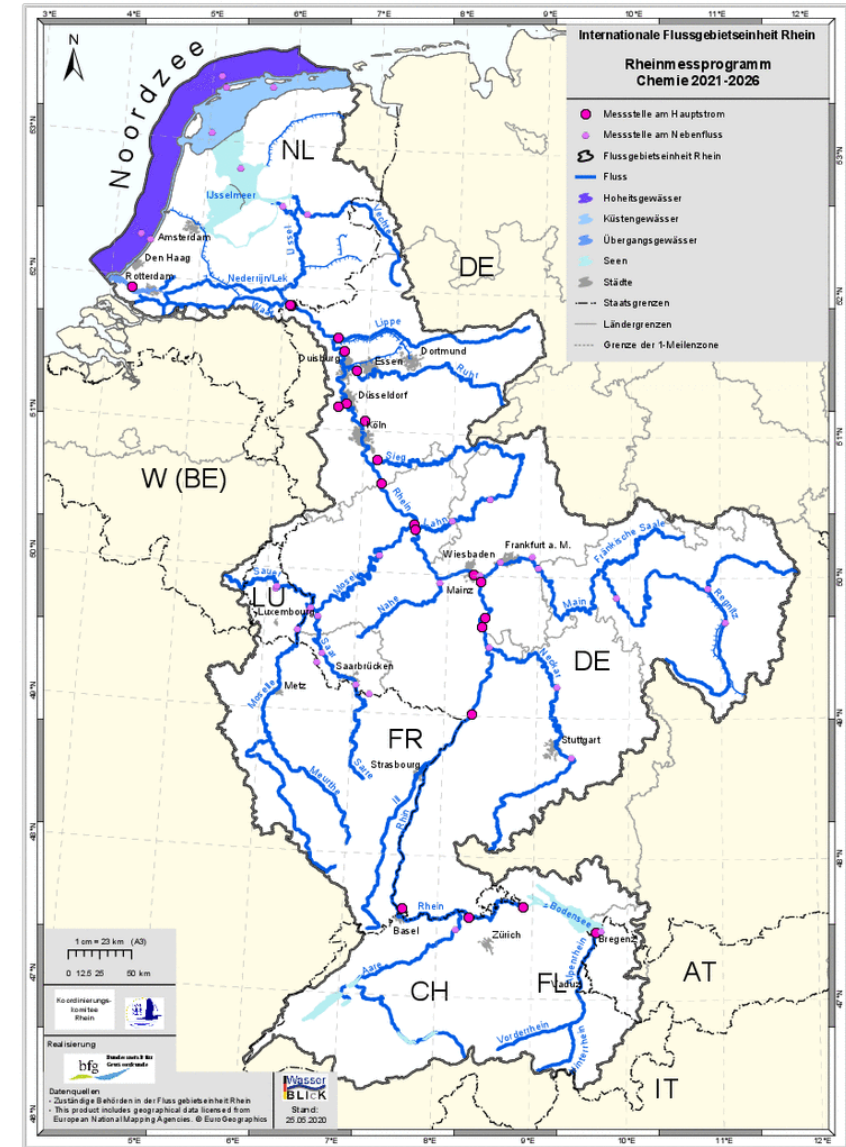


Figure 3.1 in Hernández-Mora Zapata, N. (2016). The water framework directive, paradigm shift or unrealized promises? A critical evaluation of its implementation from a boundary, economic and socio-political perspective.



ICPR – International Commission for the Protection of the Rhine:  
<https://www.iksr.org/en/topics/water-quality/monitoring-of-the-state>

# Interplay management



*„deliberate efforts to improve the interaction of two or more institutions that are distinct in terms of membership and decision-making but that deal with the same issue, usually in a non-hierarchical manner“ (Stokke 2020, 208).*



*“Societal and ecological processes work together to articulate different scalar forms of organization and to frame environmental problems and their proposed solutions” (Reed & Bruyneel 2010: 647)*

Reed, M. G., & Bruyneel, S. (2010). *Rescaling environmental governance, rethinking the state: A three-dimensional review*. *Progress in human geography*, 34(5), 646-653.

Stokke, O.S. (2020). *Interplay management*. In: Biermann, F. & Kim R.E. (2020). *Architectures of Earth System Governance*. Cambridge University Press. (207-232).

# Landscape Management and regional development in PAs with **Projects – NGOs working in Biosphere Reserves**

- EU funding
  - National programmes
- Larger investments: visitor infrastructure, restoration





# NGOs and state organizations agenda setting

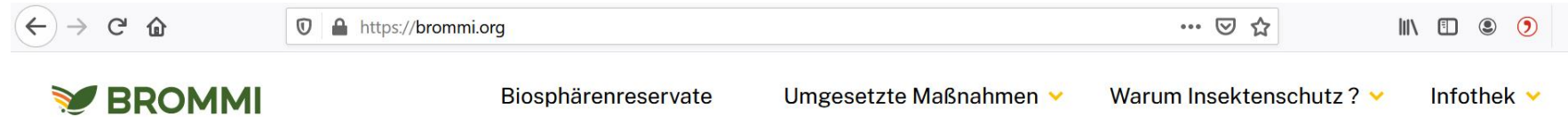
- Partnerships and agenda setting
- Project proposals

Example: WWF and  
the Donauauen National Park in  
Austria



# WWF Brommi Project

- Political interest in insect conservation
  - Political interest in river restoration
- Funding programmes → NGOs



## Gemeinsam **Insekten schützen**

**BROMMI** steht für das Projekt „Biosphärenreservate als Modelllandschaften für den Insektenschutz“.

Hier werden fünf deutsche Biosphärenreservate zu Modelllandschaften für den Insektenschutz, um sinnvolle Maßnahmen für lokale Landnutzer:innen und politische Rahmenbedingungen zu entwickeln.





NGOs lead State-funded restoration projects





# Projekt presentation Elbe



- **NGOs lead state-funded restoration projects**



<https://www.nabu.de/spenden-und-mitmachen/patenschaften/fluss/>

## Biodiversität und Schutzgebietssystem Natura 2000-Gebiete



© MF LSA

### Höhe der Förderung

- 100 % der förderfähigen Ausgaben, sofern sich die Vorhaben auf
  - die Verhinderung einer Verschlechterung, Erfüllung der Pflichten und ggf. die Wiederherstellung gemäß Vogelschutz- und FFH-Richtlinie beziehen
  - die Umsetzung der Biodiversitätsstrategie des Landes Sachsen-Anhalt durch das LAU, den Nationalpark Harz, die Biosphärenreservate Mittelelbe und Karstlandschaft Südharz, den Naturpark Drömling und die S.U.N.K. beziehen
  - die Erstellung und Fortschreibung von Pflege und Entwicklungskonzeptionen in Naturparks beziehen

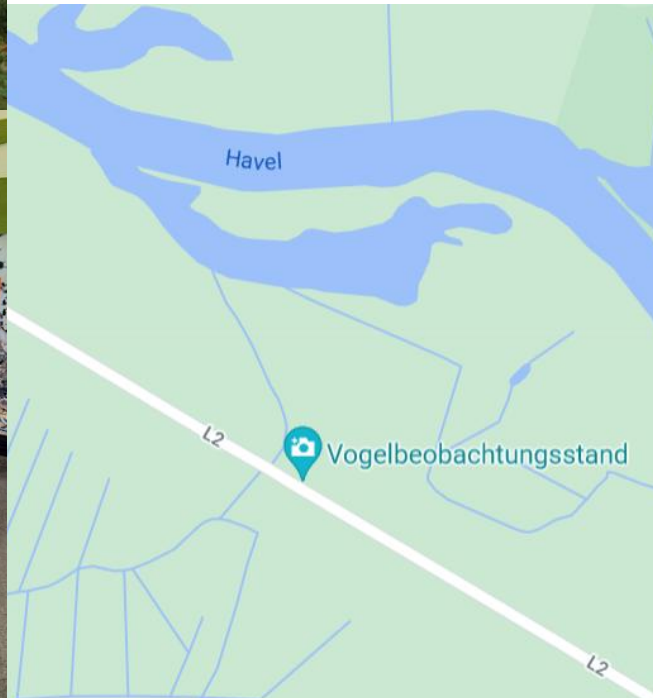
### **BRs and other PAs rely on third party funding for their projects**

- 80 % der förderfähigen Ausgaben bei sonstigen Vorhaben, bei modellhaften Vorhaben bis 90 % möglich
- 80 % (in begründeten Fällen 100 %) für Landankäufe
- Mindesthöhe der Förderung: 5.000 Euro
- Förderhöchstsumme: 750.000 Euro je Projekt (nicht für Landesamt für Umweltschutz (LAU), Nationalpark Harz, Biosphärenreservate Mittelelbe und Karstlandschaft Südharz, Naturpark Drömling, Landesforstbetrieb und das Landeszentrum Wald)



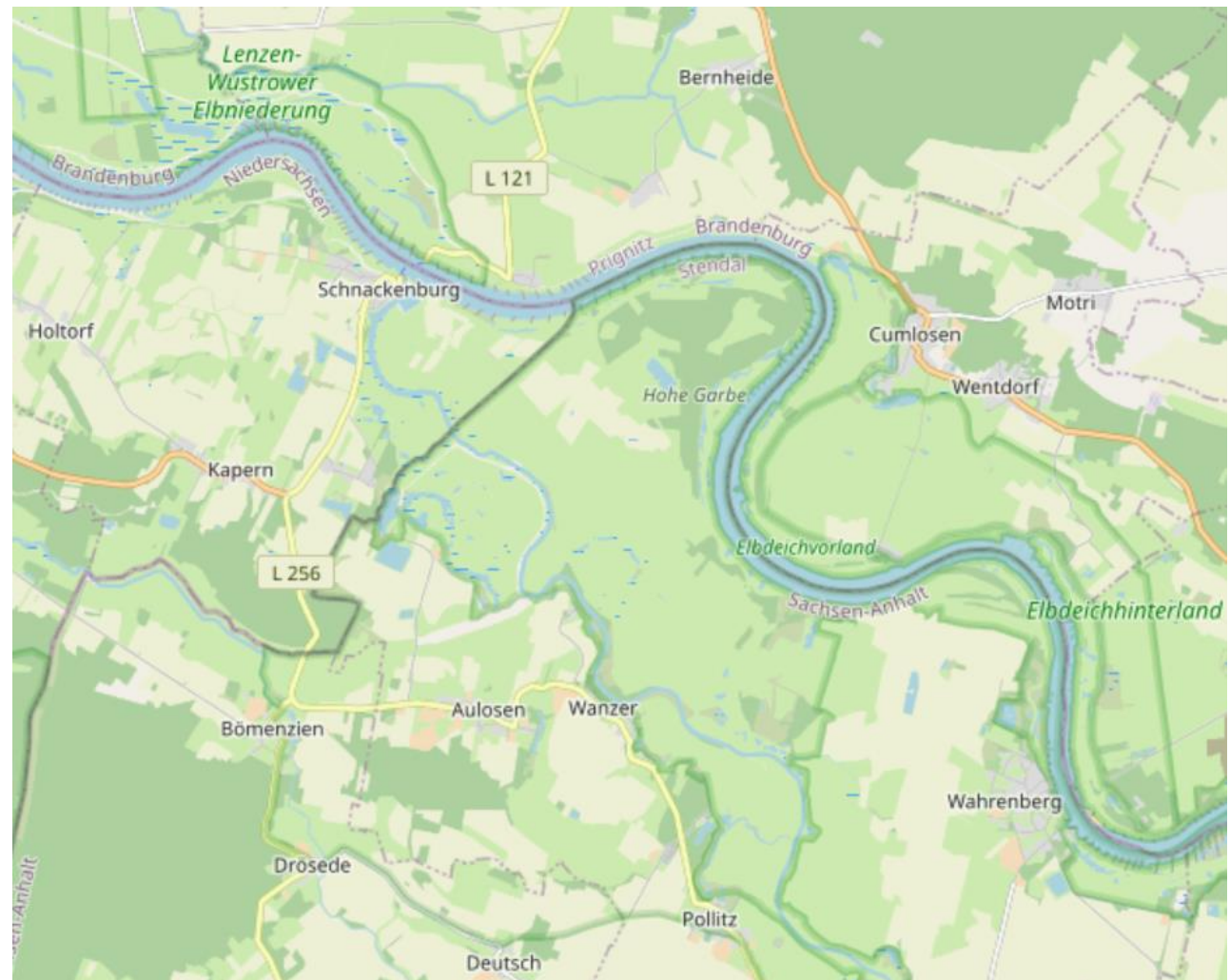


ELER Projekt „Natura 2000 Sensibilisierung im Nordosten Sachsen-Anhalts entlang von Elbe und Havel“ (*Natura 2000 awareness-raising in north-east Saxony-Anhalt along the Elbe and Havel*)



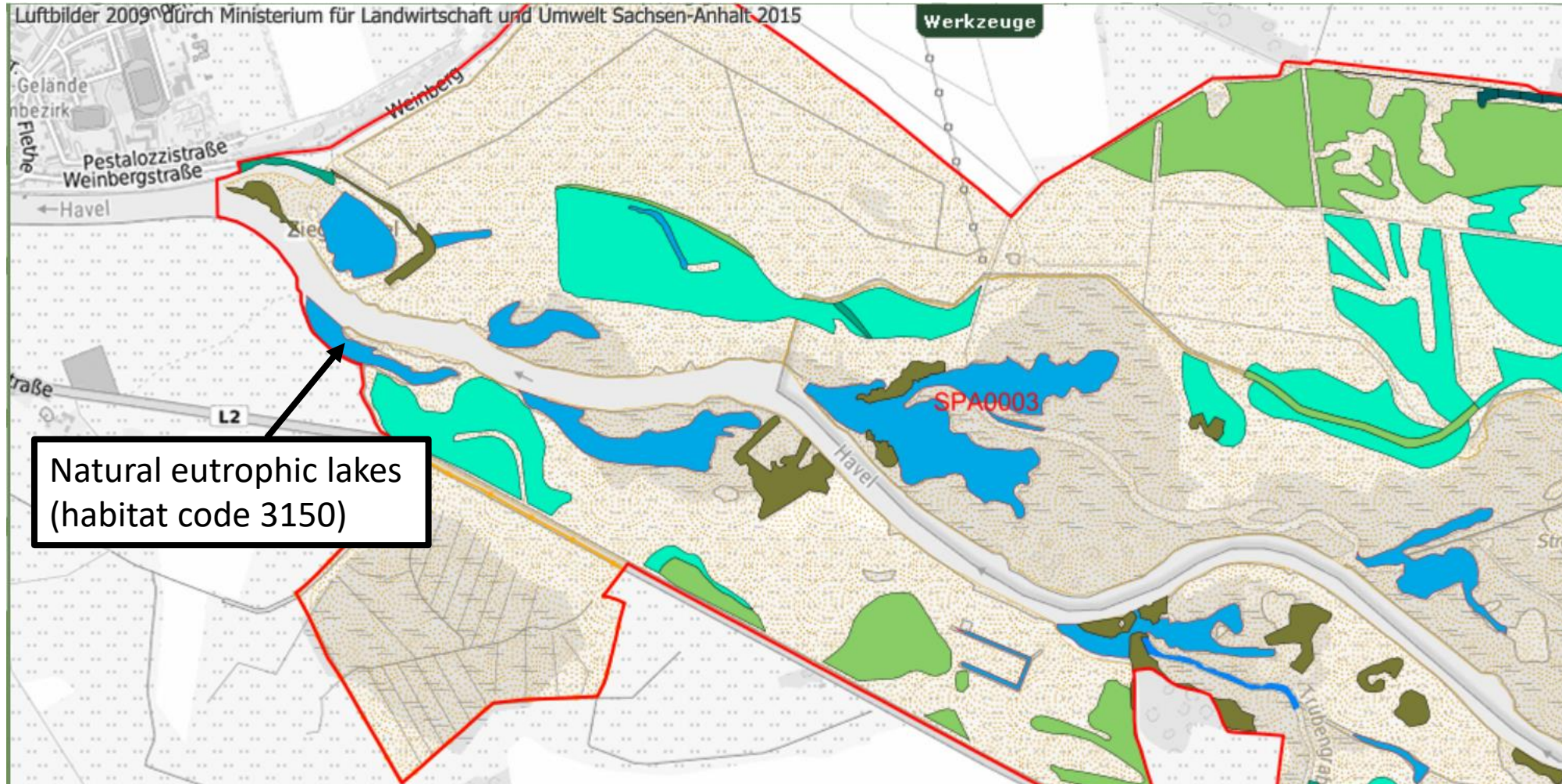


# ELBE PARKS





# Natura 2000 and river restoration

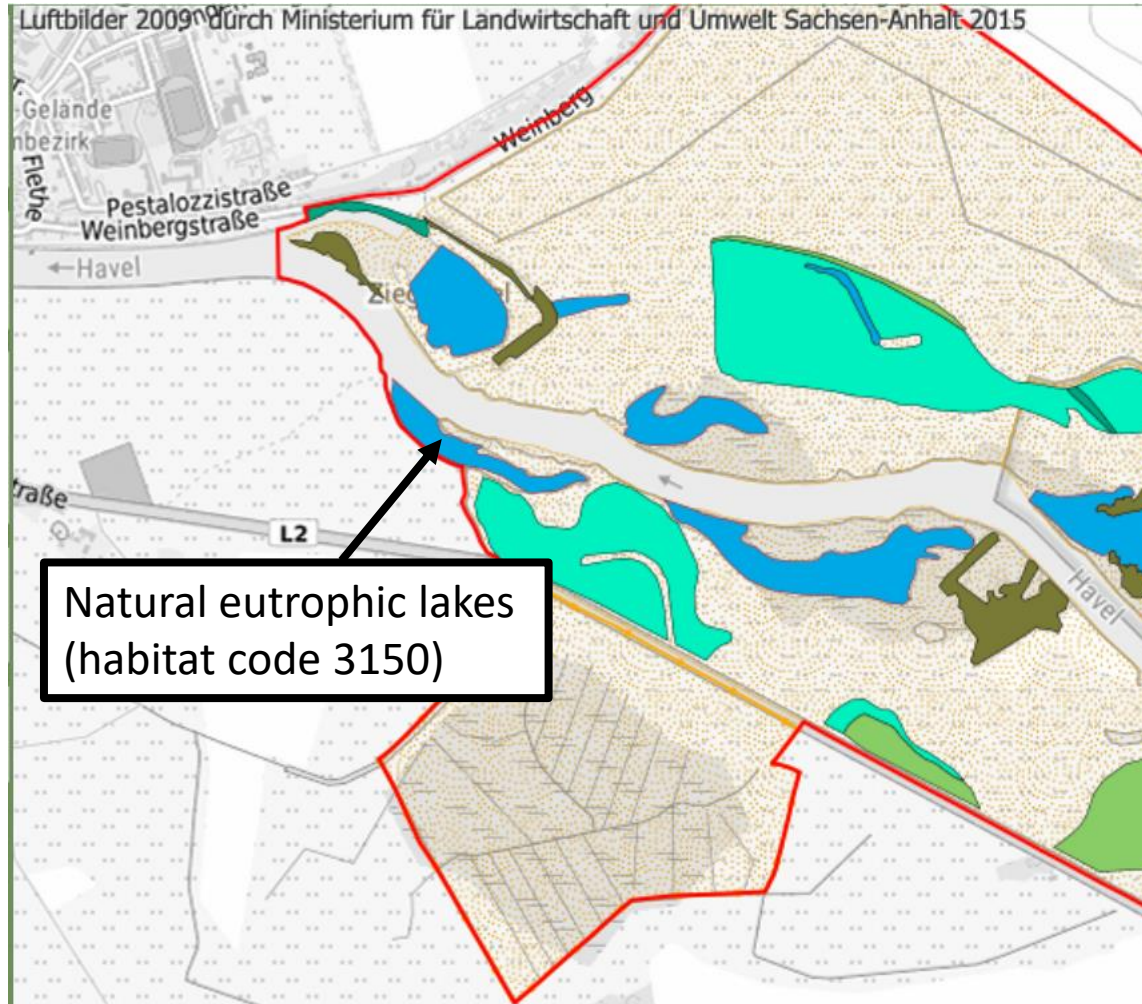


Natural eutrophic lakes  
(habitat code 3150)

Natura 2000 Information System Ministry for the Environment, Agriculture and Energy of the State Sachsen-Anhalt (2020): interactive map.  
[https://lvwa.themenbrowser.de/UMN\\_LVWA/php/geoclient.php?name=natura2000bestand](https://lvwa.themenbrowser.de/UMN_LVWA/php/geoclient.php?name=natura2000bestand)



# Natura 2000 and river restoration



NATURA 2000 Code: 3150

## Definition:

“Natural eutrophic lakes and ponds including their shoreline vegetation with floating and submerged aquatic vegetation; e.g. with duckweed communities (*Lemnetea*), pondweed communities (*Potamogetonetea pectinati*), Water-soldier (*Stratiotes aloides*) or Bladderworts (*Utricularia* spp.).

The European Commission has clarified that - depending on the definition of the term 'natural' - this habitat type may be primary or secondary (e.g. ponds) if its occurrences are subject to (semi-) natural development.

Non-environmental standing waters and hypertrophic waters are not to be included. Ox-bows as well as partial ox-bows with no throughflow are to be included (even if artificially created)”.

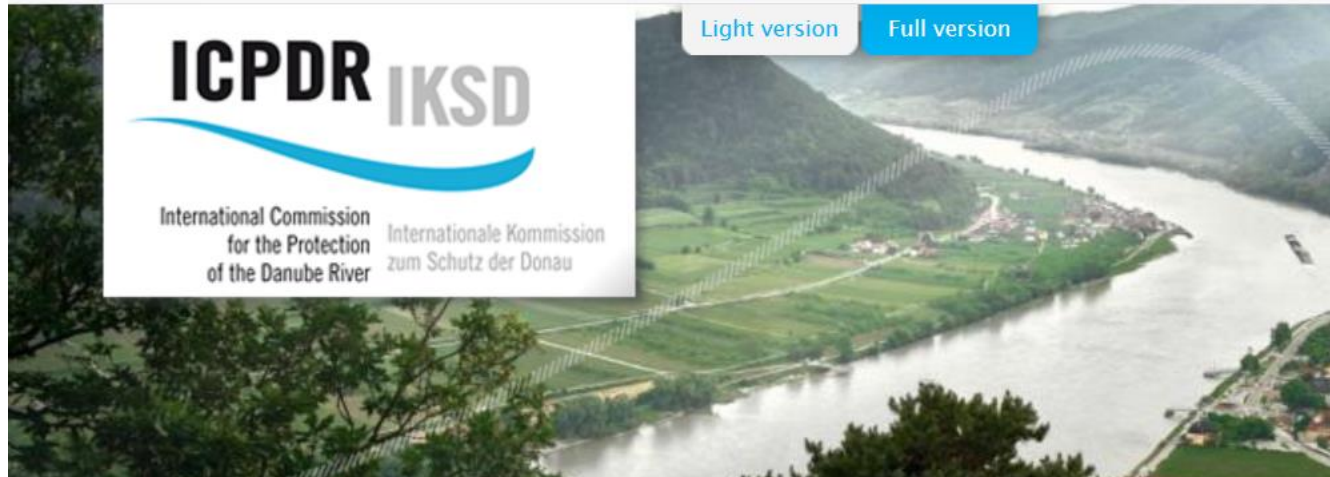
Federal Agency for Nature Conservation (2020). Natura 2000 code 3150. <https://www.bfn.de/en/lrt/natura-2000-code-3150.html>

Natura 2000 Information System Ministry for the Environment, Agriculture and Energy of the State Sachsen-Anhalt (2020): interactive map.

[https://lvwa.themenbrowser.de/UMN\\_LVWA/php/geoclient.php?name=natura2000bestand](https://lvwa.themenbrowser.de/UMN_LVWA/php/geoclient.php?name=natura2000bestand)

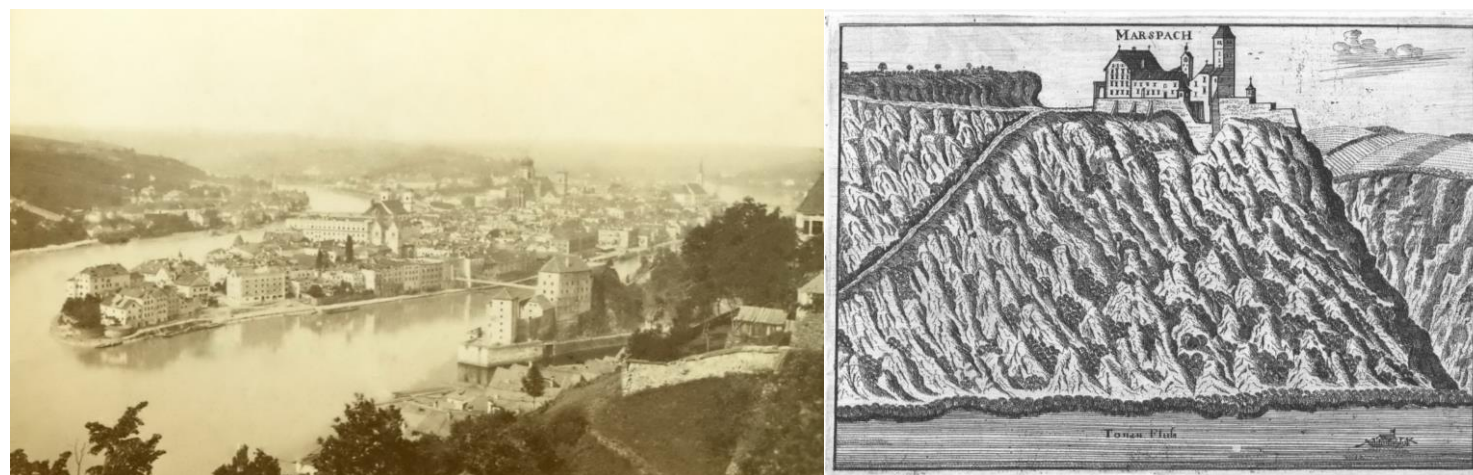
# Actors

## Regional and other multilateral organisations



**Danube River protection convention**  
(whole catchment area including all tributaries)

- International convention on shipping regulations since 1856
- Requirements for renaturalisation and prohibition of deterioration under the EU Water Framework Directive since 2000



Georg Matthäus Vischer (1674): Burg Marspach.  
[https://de.wikipedia.org/wiki/Burg\\_Marspach#/media/Datei:Marsbach\\_Vischer.jpg](https://de.wikipedia.org/wiki/Burg_Marspach#/media/Datei:Marsbach_Vischer.jpg)



# Actors

## NGOs, partnerships and agenda setting



<http://www.keybiodiversityareas.org/kba-partnership/kba-committee>

# Global Environmental Politics

## Actors

### Nongovernmental Organisations



- Red lists
  - Categories of Protected Areas
  - KBAs
  - Papers
- Agenda Setting and international standards

>1400 members : governmental organisations (ministries, conservation authorities) and NGOs

<https://www.internationalrangers.org/>



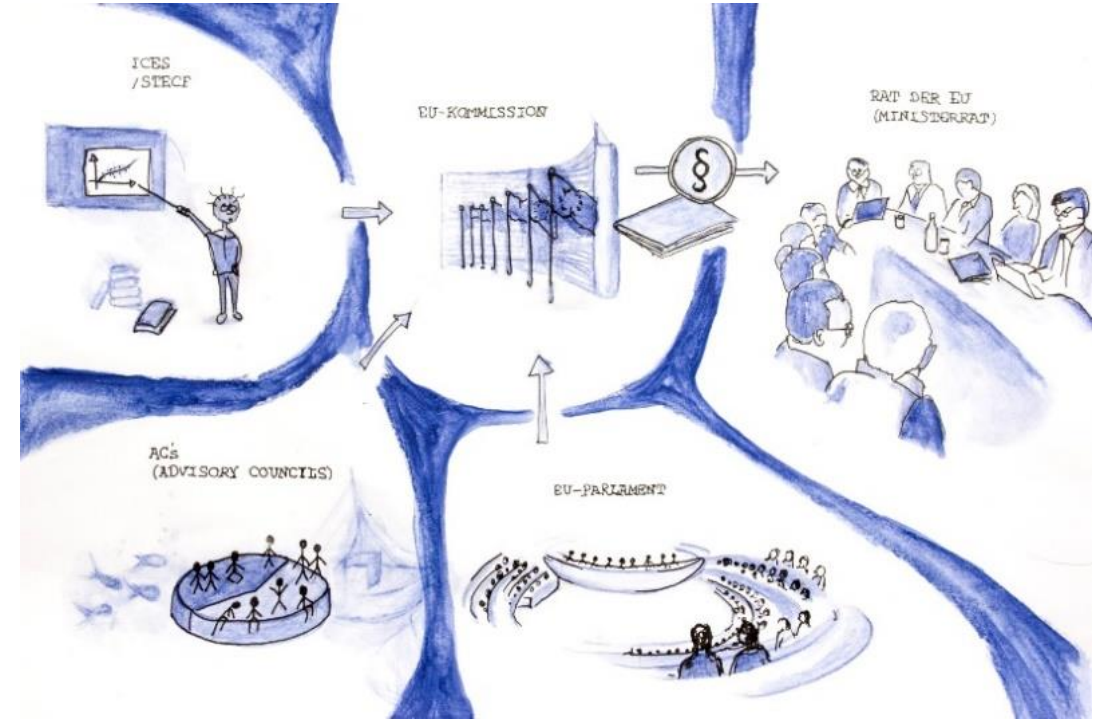
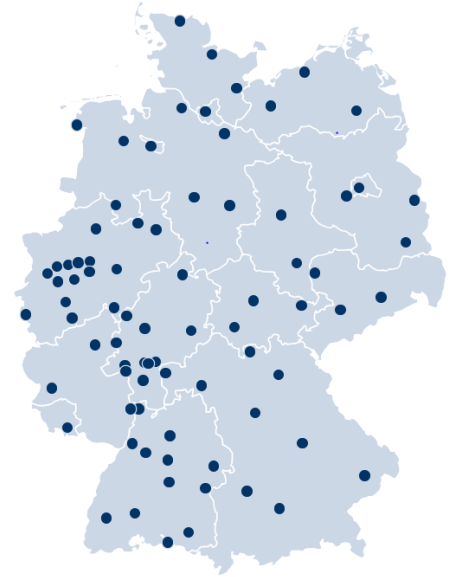
<https://eeb.org/>

# Global Environmental Politics

## Actors

Business and Industry

 lobbying





Eberswalde University  
for Sustainable  
Development

# Thank you for your attention!

