



**Eberswalde University
for Sustainable
Development**

Biosphere Reserves Institute

Land use in socio-ecological and socio-economic contexts



Week 1: April 07, 2025

Changes in the HNEE structure

- Head of Study Programme (*Studiengangsleitung*)
- Head of Examination Committee (*Vorsitzende*r des Prüfungsausschusses*)

Different from

- Study Programme Coordinator (*Studienkoordinator*in*)
- Examination Office (*Prüfungsamt*)



Head of Study Programme (*Studiengangsleitung*)

- **Academic responsibility** for the content and structure of the study programme
- **Strategic development** of the curriculum and long-term planning
- Acts as the **official representative** of the study programme within the faculty and university
- Ensures **quality assurance** and accreditation standards are met
- Coordinates with other departments and the university's administration on high-level issues
- May **chair examination boards** or curriculum committees

Written with OpenAI

Study Programme Coordinator (*Studienkoordinator*in*)

- **Operational and organizational support** for the programme
- Helps students with **timetables**, course registration, and exam scheduling
- Serves as a **contact person** for students and lecturers for day-to-day questions
- Supports the Head of Programme with **data collection** (e.g. for evaluations or accreditation)
- Assists in **implementing curriculum changes** and communication logistics

Written with OpenAI



Head of Examination Committee (*Vorsitzende*r des Prüfungsausschusses*)

- Ensures that **examination regulations (Prüfungsordnung)** are applied fairly
- **Makes decisions** on individual cases:
e.g. recognition of credits, deadline extensions, complaints, second repeat attempts
- Decides on **exceptions or hardship cases**
- May handle **disciplinary matters** (e.g. cheating allegations)
- Oversees academic fairness and quality in the examination process
- Signs or approves final decisions related to grades or degree completion

Written with OpenAI



Examination Office (*Prüfungsamt*)

- Handles the **operational side** of exams and degree progress:
- Registers exams, tracks grades, issues transcripts
- Notifies students about deadlines and formal requirements
- Ensures documents are filed and stored properly
- Implements the decisions of the **Prüfungsausschuss**
- Manages the **final degree documents** (Diploma, Transcript, etc.)

Written with OpenAI



Academic

- Head of the Study Programme
- Head of the Examination Committee

Administrative/ Organizational

- Study Programme Coordinator
- Examination Office



We are now under the Graduate School



Graduate School

Die Graduate School der HNEE steht für eine fundierte, interdisziplinäre Ausbildung in unseren → [Masterstudiengängen](#). Hier vertiefen Studierende ihr Wissen, um nachhaltige Lösungen für gesellschaftliche und ökologische Herausforderungen zu entwickeln. Mit engem Austausch zu Wirtschaft, Wissenschaft und internationalen Partnern bereiten wir sie gezielt auf verantwortungsvolle Führungs- und Gestaltungsaufgaben vor.



HNEE richtet erste europäische Masterclass für Tourismus aus – Eindrücke vom Programm am ersten Tag der Masterclass.



In the meantime...

Master Thesis registration etc.

- Registration, Hand in etc. is now handled by Silke Beuster – silke.beuster@hnee.de
- ***In case you are currently in the process of evaluating a master thesis, have a freshly registered thesis or students and co-examiners who are not yet aware of these changes, please make sure to communicate them.***
- The already written and archived thesis will move to Britta's office
- More on the process in the attached document

Examination, Module and Course Registration

- Is handled by Mike Wiebrock mike.wiebrock@hnee.de
- This is preliminary until the upcoming winter semester.

BIOM coordination

- There is currently no coordinator for BIOM, because of the Haushaltssperre we do not know when a new coordinator is going to be appointed. This means that BIOM and many other programmes will need to make do with the programme director, RSO and Silke Beuster as Master Thesis responsible person.
- ***Please note – neither Silke Beuster nor the RSOs are taking on any coordination responsibilities, they purely are employed to take care of the above stated roles.***



We need your help and understanding!

- Please read carefully before emailing!



Check-in and introduction of new faces





Adoma	Collins Asante
Afful	Mark Osae
Akutteh	Josephine
Ali	Arsalan
Anz	Fathima
Belachew	Azenegash Abebe
Donkoh	Racheal Fosu
Effah	Belinda
Enchill	Patrick
Frank	Witja
Ghasemnezhad Sikaroody	Ali
Gyekye	Millicent Darkoa
Jahnkow	Anne
Kannadi	Galice
Koch Zeiner	Kai Alexander
Kumar	Arun
Lilienthal	Philipp
Oguz	Dursadiye
Ojha	Dristi
Orellana	Violeta
Reimann Salazar	Valeria Lucero
Schulze	Johanna
Sivasankaran	Venkat
Sreenilayam Narayankutty	Sreelakshmi
Trim	Clare
Wigand	David
Yamoah	Elvis

In our previous module (Samovar et al. 2015)

- Psychological noise (mind)
- Physiological noise (body)
- Physical noise (ambient)
- Semantic noise (linguistic)



Schedule for week one

Date	Time slots	Topics	Lecturers	Format Room
07.04. (Monday)	10:30 – 11:30	Introduction to the course Basic concepts of land use	Prof. Dr. Matias	In-person 02.115
	11:30 – 12:30	Lunch		Online
	12:30 – 13:00	Meeting with Leiden University		
	13:00 – 15:00	Exam orientation and group meeting		
	15:00 – 18:00	Reading time (Meyfroidt et al., 2022)	Self-study	



Schedule for week one

Date	Time slots	Topics	Lecturers	Format Room
08.04. (Tuesday)	09:00 – 10:30	Reading time (Meyfroidt et al., 2022)	Self-study	In-person 02.212
	10:30 – 12:30	Land use systems for sustainability	Prof. Dr. Matias	
	12:30 – 13:30	Lunch break		
	14:00 – 16:30	Reading time (Cinco-Ramos et al. 2025), review lecture	Self-study	

...cont'd

09.04. (Wednesday)	09:00 – 10:30	Reading time (Cinco-Ramos et al. 2025), review lecture	Self-study	In-person 02.212
	10:30 – 12:30	Land use systems for sustainability	Prof. Dr. Matias	
10.04. (Thursday)	09:00 – 12:30	Reading time (Ortiz et al. 2021), review lecture	Self-study	Online on Zoom
	12:30 – 13:30	Lunch break		
	14:00 – 16:30	Interactions between biodiversity, agriculture, climate change and international trade	Prof. Dr. Matias / Dr. Monica Ortiz	



...cont'd

11.04. (Friday)	09:00 – 10:30	Reading UNESCO International designations	Self-study	Online on Zoom
	10:30 – 12:30	IDAs; Mount Hakusan Biosphere Reserve (Japan)	Prof. Dr. Matias	
	12:30 – 13:30	Lunch		
	13:30 – 16:30	Reading time (Jonas et al., 2017)		



Rail construction from 11 April to 31 May

Construction-related rail measures from 11 April to 31 May

11-24 April, trains of DB are cancelled completely: take S2 to Bernau, then replacement service with buses between Bernau and Eberswalde

from 25 April to 31 May, S2 to Bernau will continue, then the RE3 will run again between Bernau and Eberswalde.





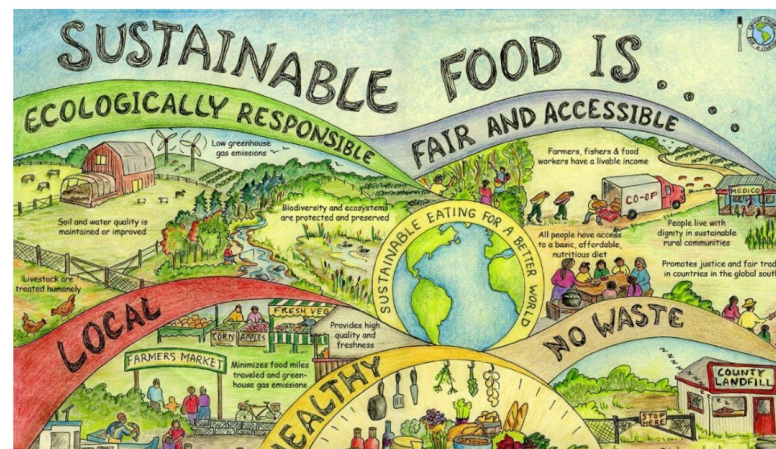
Leiden University Learning Partnership



**Universiteit
Leiden**
University College The Hague

**Leiden University College
2024 - 2025
Block 4**

Equity and Justice in Food System Transformations





Co-professor

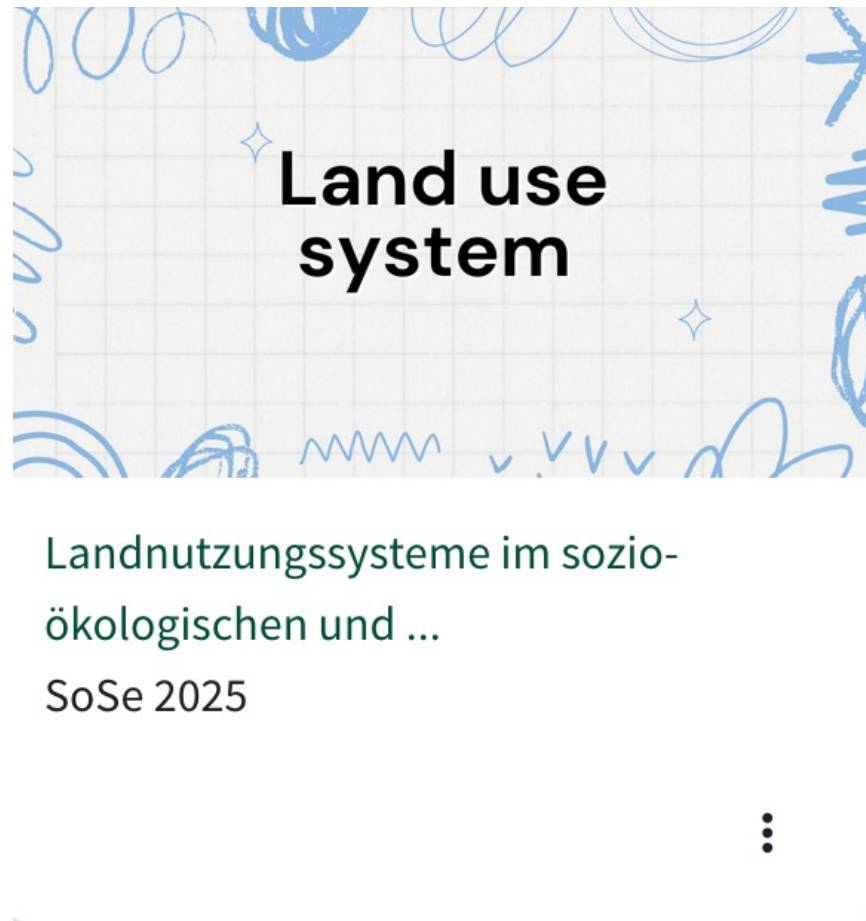
Dr. Aisa Manlosa

Leiden University

- Leuphana University (PhD)
- University of the Philippines Los Baños (MSc)
- Mindanao State University (BSc)



Moodle





Guest speaker on April 10 (Thursday)

Dr. Andrea Monica Ortiz

University of Concepción, Chile

- [University of Sheffield Department of Geography](#) (PhD)
- BOKU Vienna and University of Copenhagen (MSc)
- University of Oregon (BSc)



**Eberswalde University
for Sustainable
Development**

Biosphere Reserves Institute

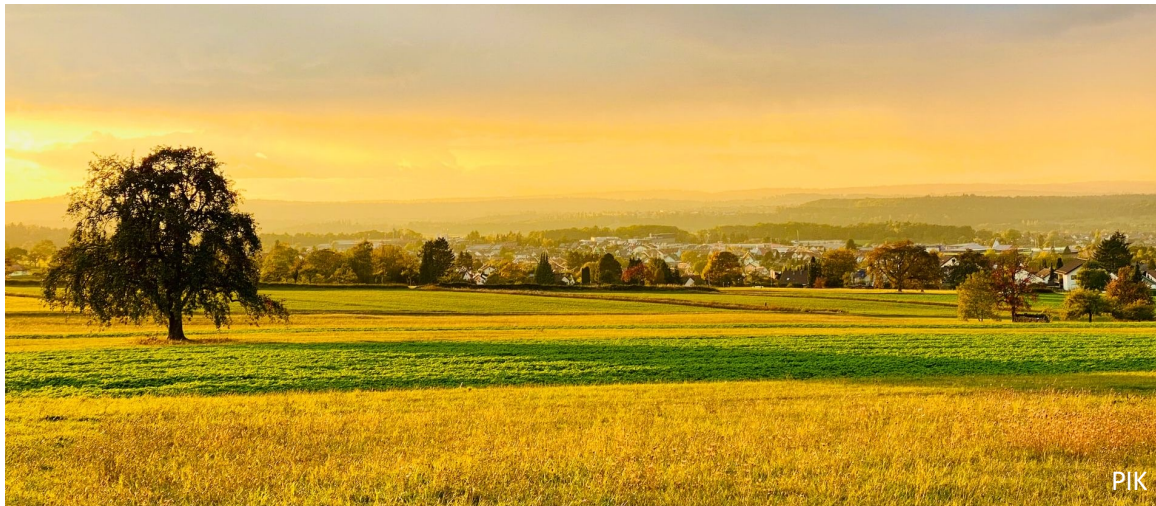
Land use in socio-ecological and socio-economic contexts



Week 1: April 07, 2025



What comes to your mind when you hear the word “land”



What about “land use” are you curious about?



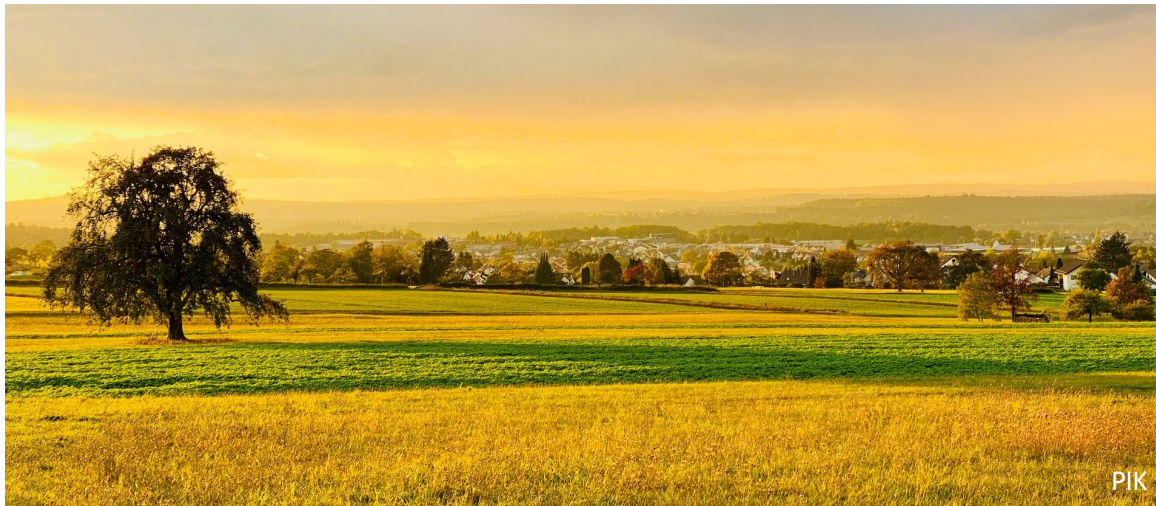


Please write your answers

1. What comes to your mind when you hear the word “land”
2. What about “land use” are you curious about?



What comes to your mind when you hear the word “land”



Last year's input

- Surface of earth (forest, agriculture, urban)
- Extension of territory for general usage or not
- Available space free from water / any space devoid of water
- Uses (agriculture, urbanism, industries)
- Conflicts



- Resources
- Sustainability
- Fertile soil
- Usage in some kind of economical way / for human purpose
- Delimited area, zonation
- Area with specific landscape & biodiversity
- Can be owned by private or public owners
- “natural” landscape but humans use land in many various ways → conflict
- Landscape (agriculture, urbanization, conflicts / controversies)

- Soil
- Economic independence
- Travel
- Ice Age
- Different sceneries
- Urban or country side
- Bavarian scenery “Heimat”
- Beautiful Indian landscape
- Aldo Leopold’s “Land Ethic”
- Visual element



Definition of land according to the UNCCD (1994)

- The **terrestrial** bio-productive system that comprises soil, vegetation, other biota, and the ecological and hydrological processes that operate within the system



Definition of “land” according to FAO (1976)

Physical environment

Climate
Soils
Hydrology
Vegetation

Temporal scale

Past and present human
activity

e.g. reclamation, vegetation
clearance, soil salinization

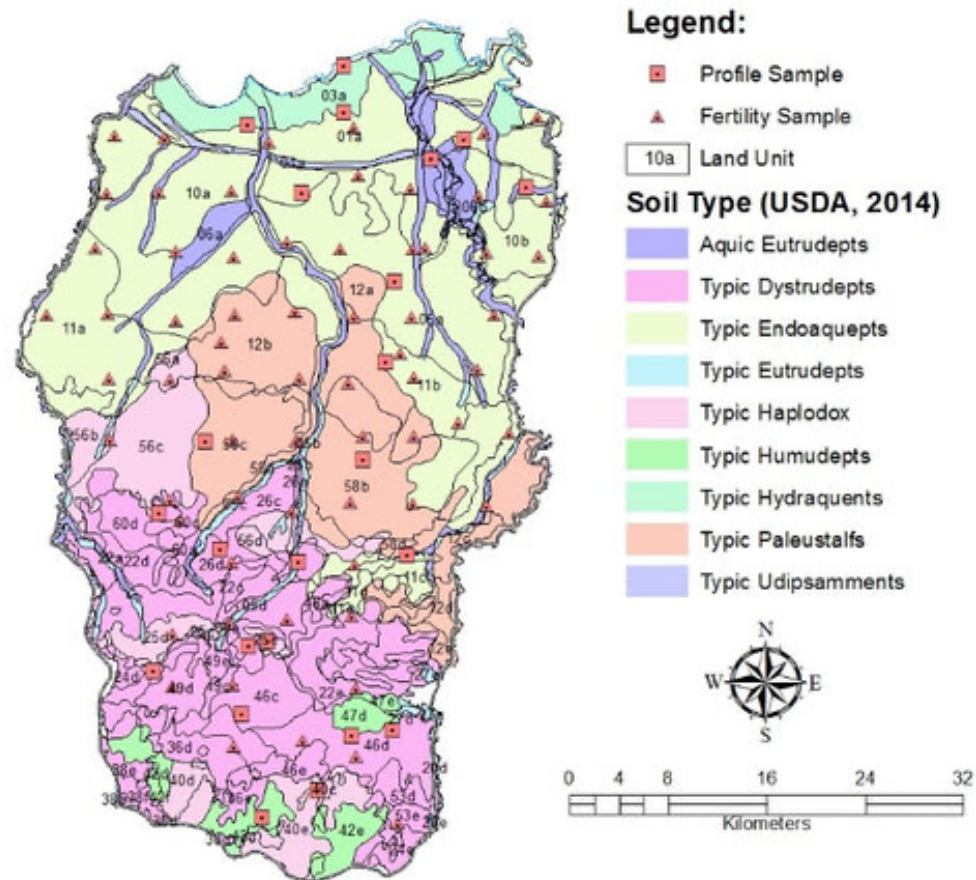


What is a land mapping unit a.k.a. land unit?

- Areas of land with specific characteristics
- Defined and mapped by natural resource surveys (e.g. soil survey, forest inventory)
- Most obvious (mappable) land attributes: land-form, soil and vegetation



Example



Source: Widiatmaka 2016



A note from the FAO (1976)

- Purely economic and social characteristics, however, are **not** included in the concept of land; these form part of the economic and social context.



Socio-economic context and definitions of “Land Use”

Human use of land
(EPA 2021)

**Socio-economic
description (functional
dimension) of areas**
(EEA 2022)



Definition of land use (FAO and UNEP 1999)

Characterized by

- arrangements
- activities
- inputs

... by people to

- produce
- change or
- maintain

...a certain land cover type

Source: Di Gregorio and Jansen 1998 as quoted by FAO and UNEP 1999



Definition of land cover (FAO and UNEP 1999)

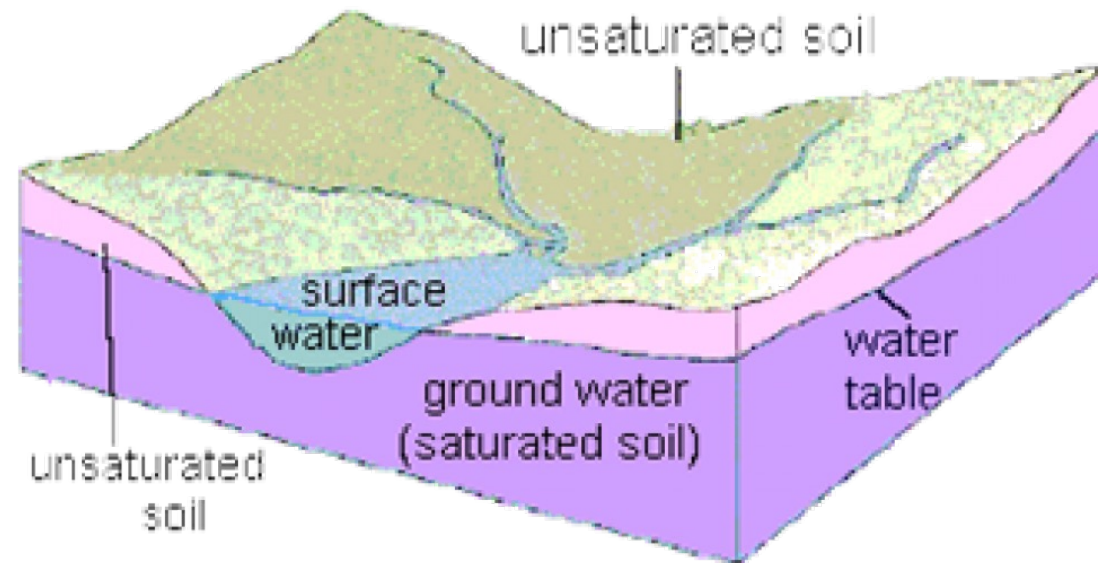
Attributes of the earth's land surface and immediate subsurface, including:

- Biota (flora, fauna, fungi, microorganisms)
- Soil (upper layer of earth w/ organic remains, clay, rock particles)
- Topography (shape, height, and depth)

Source: Di Gregorio and Jansen 1998 as quoted by FAO and UNEP 1999

Definition of land cover (FAO and UNEP 1999)

- Surface water and groundwater
- Human structures



Source: Di Gregorio and Jansen 1998 as quoted by FAO and UNEP 1999, Image from USGS